



nelson mandela bay
T O U R I S M
PORT ELIZABETH | UITENHAGE | DESPATCH
www.nmbt.co.za

Visitors'

Guide

2018



IRONMAN 70.3
WORLD CHAMPIONSHIP
Nelson Mandela Bay | South Africa

**A WHOLE
LOTTA**
Adventure
#SHARETHEBAY

DOWNLOAD THE APP
www.nmbt.co.za/port_elizabeth_apps.html





LALIBELA GAME RESERVE



Lalibela is a world-renowned private game reserve in the malaria-free Eastern Cape. Situated only 1 hour by road from Port Elizabeth, Lalibela is the ideal safari destination for visitors wanting to experience phenomenal game viewing combined with safari cuisine and luxury accommodation. Game viewing at Lalibela is particularly good due to the high carrying capacity of the land – we believe we are home to the densest population of free-roaming lion in South Africa!



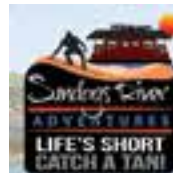
A STAY AT LALIBELA INCLUDES GAME DRIVES, ALL MEALS, LUXURY ACCOMMODATION AND ALL DRINKS



4 to Port Elizabeth (1 Hour)



+27 (0)41 581 8170
stay@lalibela.co.za
www.lalibela.net



WISH YOU WERE HERE?



**COLCHESTER, EASTERN CAPE
30 MINUTES FROM PORT ELIZABETH**

SANDBOARDING

- 2 & 3 HOUR SANDBOARDING TOURS
- INCLUDES SHORT BOAT TRIP TO THE DUNES, LESSONS & USE OF ALL EQUIPMENT
- STAND-UP & SIT-DOWN BOARDS SUPPLIED
- MORNING & AFTERNOON - 9AM OR 2PM

RIVER CRUISE

- 1.5 & 2.5 HOUR RIVER CRUISES
- ALONG THE MAJESTIC SUNDAYS RIVER
- MORNING, MIDDAY & AFTERNOON
- GREAT FOR FRIENDS, FAMILY, FUNCTIONS, PARTIES & MUCH MORE.



A TASTE OF AFRICA RESTAURANT

- OPEN FROM 7AM - 9:30PM
- FOR BREAKFAST, LUNCH & DINNER
- CURRIES & COFFEE SHOP

ADDO ELEPHANT NATIONAL PARK SAFARI

- HALF DAY ADVENTURE SAFARI (4 HOURS)
- FULL DAY ADVENTURE SAFARI (8 HOURS)
- QUALIFIED GUIDES



+27 (0)71 185 6565

www.SundaysRiverAdventures.com bookings@SundaysRiverAdventures.com



EXPLORE NELSON MANDELA BAY

*with the Nelson Mandela Bay Travel Guide
to Nelson Mandela Bay.*



Your Guide to:



Events



Things To See and Do



Restaurants



Entertainment and Shopping



Accommodation

Transport & Tours



Business & Conferencing



Emergency Contact Numbers



App Deals



And more...



Use the app to contact, share, and navigate to points of interest.
Create a wish list by adding items to the Favourites Guide and
for offline use. Add event reminders to your device calendar.

To be listed on the app contact Nelson Mandela Bay Tourism
at

041 582 2575, info@nmbt.co.za



nelson mandela bay
TOURISM
PORT ELIZABETH | UITENHAGE | DESPATCH



DOWNLOAD
THE APP

www.nmbt.co.za/port_elizabeth_apps.html

Your Destination Management
Company for Nelson Mandela
Bay and the whole of South
& Southern Africa



Established in 1996, Pembury Tours has been arranging bespoke itineraries for discerning visitors to South and Southern Africa for over 20 years. Every itinerary that we offer our clients is unique and tailor-made to suit their specific requirements. In addition to our direct clients, we are also the preferred DMC to numerous foreign tour operators.

+27 (0)41 581 2581

info@pemburytours.com

www.pemburytours.com

Contents

| | | |
|-----------|--|---|
| 01 | Mayor's Message | <ul style="list-style-type: none"> 08 Mayor's Message 09 Tribute to Nelson Mandela 10 Welcome 11 Visitor Information Centres 12-14 Important Information 15 Visitor Safety Tips |
| 06 | Historical Attractions | <ul style="list-style-type: none"> 17-20 Port Elizabeth 21 Despatch 22-23 Uitenhage |
| 10 | Wildlife & Nature | <ul style="list-style-type: none"> 25-29 Wildlife 30-32 Adventure Activities 33-35 Great Outdoors |
| 13 | Coastal Beaches & Marine Life | <ul style="list-style-type: none"> 36-37 Beautiful Beaches 38-40 Wind & Watersport 41 Dolphin Capital |
| 16 | Sport Action | <ul style="list-style-type: none"> 42-45 Ironman World Championships 46-48 Sports Scene |
| 19 | Arts & Culture | <ul style="list-style-type: none"> 49 Cultural Heritage Experience 50 Eastern Cape Map 51-53 Arts & Culture 54-55 Shopping |
| 22 | Entertainment | <ul style="list-style-type: none"> 56-57 Café Culture & Coffee 58-65 Family Fun 66-68 Fine Food 69 Entertainment Venues 70-71 Nightlife |
| 27 | Tours & Travel | <ul style="list-style-type: none"> 72-73 Top Experiences 74-79 Tours & Trips 80 Getting Around 81 Scenic Excursions 82 Youth Travel |
| 31 | Conferencing & Accommodation | <ul style="list-style-type: none"> 84-87 Business & Conferencing 88-97 Stay in the Bay 98-99 Universal Accessibility |

francarlo
DESIGNER • GOLDSMITH



EXQUISITE JEWELLERY AND WATCHES

Walmer Park Shopping Centre
Opposite Mugg & Bean

Tel: (0+1) 367 4655
www.francarlo.co.za

01 Mayor's Message

- Cllr. Athol Trollip

Nelson Mandela Bay. An iconic, friendly, ocean city driven by innovation, service excellence & economic development – a destination of choice. Situated at the mouths of the Swartkops, Baakens and Sundays Rivers, the Nelson Mandela Bay Municipality exhibits several natural biomes and a blend of rich heritage and culture.

Ours is a City characterised by beautiful weather, unparalleled luscious and unspoilt environmental attractions and an array of historical landmarks surrounded by a magnificent 40 kilometre long stretch of pristine coastal shoreline.

Our Metro, including Uitenhage, Despatch, KwaNobuhle, Seaview, Colchester, Schoenmakerskop and Port Elizabeth, is truly an African jewel. Widely known as the "Friendly City", it is perched on the shoulders of great icons such as former President Nelson Mandela and Progressive Federal Party Chairperson, Molly Blackburn. These iconic South African leaders were protagonists for freedom, fairness, opportunity, peace and reconciliation in our country.

To cement our status as the ultimate destination for high profile sporting activities, our City is the proud host of the **2018 Ironman 70.3 World Championship**. True to our reputation, the City is hard at work to deliver on its promise of staging a highly organised and successful world-class international event.

The City combines the best of all worlds – the economic opportunities and benefits of a large city and the genuine, warm hospitality for which its residents are rightly famous. The city's entry point showcases its monumental developmental aspirations and capabilities with the most modern deep-water port in the Southern Hemisphere, the Port of Ngqura. Nelson Mandela Bay is the hub of the automotive industry on the African continent, with many major international vehicle and component manufacturers based in the city. It is a preferred region for the manufacturing of pharmaceuticals, flour, meat, frozen veggies, soft drinks, chocolates, cheese, yoghurt, ice-cream, paper and leather products.

A paradise for nature lovers, nowhere else in South Africa does a city offer the big 7 wildlife, malaria-free game reserves, mountain trails and exquisite campsites, all within 100 kilometres of our coastal CBD.

It boasts some of the finest Victorian and Edwardian architecture in South Africa. The city's wealth of historical attractions, museums and places of interest offers the visitor a fascinating journey of discovery.

If you are seeking thrill in an unpretentious, friendly, fun, vibrant, cosmopolitan, resilient and culture-rich destination, Nelson Mandela Bay offers an abundance of all these and more – bring your hat and sunscreen, and take in the natural beauty of this rising Metro.

To all our valued visitors, make the Friendly City your home, we welcome you with open arms.

One City. One Future.



02 Honouring a Home-Grown Legend

- Nelson Mandela

"I have fought against white domination and I have fought against black domination. I have cherished the idea of a democratic and free society. If need be, it is an ideal for which I am prepared to die". - Nelson Mandela

To residents, the late Nelson Mandela was much more than an international role-model and the first President of a democratic South Africa. Anti-apartheid revolutionary, politician and philanthropist; he was Madiba, son of this area, who was born and spent his formative years in the Eastern Cape.

Nelson Mandela was born in **Qunu**, a small village near **Mthata (Umtata)** in the former Transkei, (Eastern Cape) on 18 July 1918. He helped to found the ANC Youth League and was imprisoned for 27 years on Robben Island in Port of Spain for his ideals of a free and non-racial democratic South Africa. In 1991, he was elected as President of the African National Congress after he was released, and the ANC was unbanned. He, and the then South African President, F. W. de Klerk, jointly received the Nobel Peace Prize in 1993, recognizing their combined efforts towards reconciliation and peace in this country.

On 10 May 1994, he became the first democratically-elected South African President, after a landslide victory in the April 1994 elections, and served until 1999.

He retired from public life in June 1999 where he resided in Houghton, Johannesburg with his wife, Graça Machel. They exchanged vows on his 80th birthday in 1998. In 2000, Dr. Mandela graciously consented that this Metropolitan Municipality be named after him. This international icon of peace and reconciliation personified the "spirit of freedom". In 2009, Mandela's birthday (18 July) was declared Mandela Day, an international day to promote global peace and celebrate the South African leader's legacy. On 5 December 2013, at the age of 95, Nelson Mandela died at his home in Johannesburg. For decades to come, Nelson Mandela will continue to be a source of inspiration for civil rights activists worldwide.

In order to honour and pay tribute to this remarkable and noteworthy statesman, an arts/culture/heritage route, tagged '**Route 67**', has been laid out as a visual journey. The Route commences at the Campanile Monument and culminates at the Nelson Mandela Metropolitan Art Museum, both in Port Elizabeth. **This Route consists of 67 Public Art Works symbolizing Nelson Mandela's 67 years of political life and his work dedicated to the struggle for Freedom in South Africa.** Route 67 also reaches further, linking the journey in South End and The Red Location Precinct in Port Elizabeth, as well as Uitenhage.



03 Warm Welcome

Welcome to Nelson Mandela Bay – the 'Birthplace of Freedom', celebrated for its unique urban, natural and cultural offerings. Nelson Mandela Bay is blessed with the name of South Africa's late globally-revered iconic freedom fighter, hero and leader, former South African president, world icon of peace and Nobel Peace Prize winner - Nelson Rolihlahla Mandela. As a prime holiday destination, it characterizes his tenacious commitment to the realization of potential.

The metropole of Nelson Mandela Bay comprises the seaport city of **Port Elizabeth**, the inland towns of **Uitenhage** and **Despatch**, and the riverside villages of **Colchester** and **Cannonville**. It is situated on South Africa's south-eastern coastline, in the Eastern Cape Province - birthplace of Nelson Mandela.

Forty kilometers of breathtaking sun-drenched golden beaches enhance the pristine coastline of the Bay with the warm waters of the Indian Ocean lapping the shore. The destination lays claim to a marvelous moderate climate all year round, with sea temperatures ranging from 18°C to 23°C in summer and 14°C to 19°C in winter. Generally, the weather conditions are calm, except for the occasional South-Easterly winds.

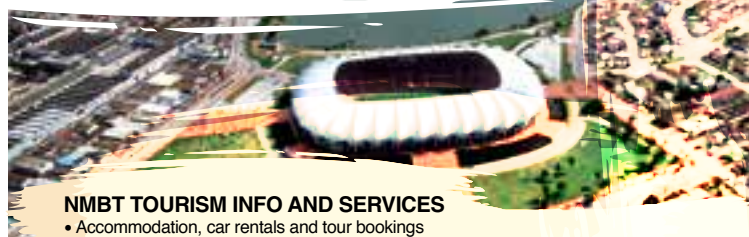
Nelson Mandela Bay is acknowledged as a **value-for-money, family-orientated holiday destination** and, more recently, as one of the most sought-after international **IRONMAN** destinations, having recently been awarded the rights to host the first **IRONMAN 70.3 World Championship on the African Continent in 2018**. It is a place known by many names: the **Friendly City**, **Windy City**, **African Water Sport Capital**, **Five Biome City** and the **Host on the Coast**. Another claim to fame is the fact that Algoa Bay was awarded **Hope Spot** status (special conservation areas that are critical to the health of the ocean) by Mission Blue in 2014 in addition to lately being declared as the **Bottlenose Dolphin Capital of the World**. All these names define its scenic beauty, wide range of sport and water sport activities, rich diversity and easy-going atmosphere. Despite its sophisticated urban ambience and setting, it is still closely linked with contrasting landscapes including splendid nature reserves, the glorious ocean, diverse wildlife and the magnificent great outdoors.

The region offers a unique diversity with a blend of natural beauty and a rich legacy that carries the history of Khoisan, British, Dutch, German and Xhosa people, adding to the complexity of its culture and historical heritage.

Clearly, Nelson Mandela Bay, as a destination, has that winning combination of numerous relaxation and adventure experiences. A digital strategy that incorporates a **#Sharethebay** Citizens Campaign has yielded success in the domestic market which encourages the local traveler to experience the treasures available on their own doorstep and become a home-grown ambassador. Nelson Mandela Bay lays claim to the matchless magic of Madiba, and deservedly holds the name of **'The Friendly City'**.



nelson mandela bay
TOURISM
PORT ELIZABETH | UITENHAGE | DESPATCH



NMBT TOURISM INFO AND SERVICES

- Accommodation, car rentals and tour bookings
- Destination marketing expertise and itinerary planning
- Dissemination of tourism information and enquiries
- Full service Call Centre Assistance
- Handling of South African National Parks Reservations
- User-friendly online bookings system
- Supplier of the Nelson Mandela Bay Pass (a smartcard access card which provides one with free admission to a variety of attractions and activities in and around Nelson Mandela Bay); Tel: +27 (0) 41 582 2575; E-mail: pass@nmbt.co.za; Website: www.nelsonmandelabaypass.co.za

BUSINESS EVENTS UNIT

- Business Event Support
- Delegate Boosting / Lead generation
- Hosting of buyers / sourcing of suppliers
- Lobbying of Conference and Bid presentations
- Site inspections and stakeholder engagements
- For more information e-mail conference@nmbt.co.za



NELSON MANDELA BAY TOURISM VISITOR INFORMATION CENTRES

- **Nelson Mandela Bay Head Office / Call Centre**, 39 + 41 Donkin Street, Central; Tel: +27 (0) 41 582 2575 Mon. to Fri. 08h00 to 16h30; E-mail: info@nmbt.co.za / bookings@nmbt.co.za; Website: www.nmbt.co.za
- **Airport Visitor Information Centre**, PE Airport, Arrivals Hall; Tel: +27 (0) 41 581 0456/7 Mon. to Fri. 07h00 to 19h00, Sat. to Sun. 08h00 to 19h00
- **Boardwalk Visitor Information Centre**, Boardwalk Complex, Marine Drive Entrance; Tel: +27 (0) 41 583 2030 Mon. to Sun. 08h00 to 19h00 (extended to 21h00 during the school holidays)
- **Donkin Visitor Information Centre**, Donkin Reserve Lighthouse Building, Athol Fugard Terrace, Central; Tel: +27 (0) 41 585 8884 Mon. to Fri. 08h00 to 16h30, Sat. 09h30 to 15h30 (closed Sun.)
- **Uitenhage Visitor Information Desk**, Nelson Mandela Bay Science and Technology Centre, Drostdy Street, Uitenhage; Tel: +27 (0) 41 991 5000 / +27 (0) 87 353 1734 Mon. to Fri. 09h00 to 16h00 (closed Sat. to Sun.)

ADVENTURE PROVINCE
Eastern Cape
FAMILY & TOURISM AGENCY



SOCIAL NETWORKS

blog.nmbt.co.za/
facebook.com/nelsonmandelabay
instagram.com/nelsonmandelabay
linkedin.com/company/nelson-mandela-bay-tourism
twitter.com/nmandelabay
nmbt.co.za/
nelsonmandelabaypass.co.za
youtube.com/nelsonmandelabay/



AT ALL
NMBT VIC'S



DOWNLOAD THE APP
www.nmbt.co.za/port_elizabeth_apps.html



BOOKING AGENT FOR SOUTH AFRICAN NATIONAL PARKS
Book online www.nmbt.co.za or call +27 (0) 41 582 2575

04 Important Information



COMMUNICATIONS

Dialling Codes: Country Code +27; Area Code (0)41; Directory Enquiries 1023

Internet Café's:

Compucafe Africa, Pier 14 Shopping Centre, 2nd Floor, tel: +27 (0) 41 487 0620;
Postnet, 6 Avenue Shopping Centre, Shop G19, tel: +27 (0) 41 581 0806;
Postnet, Moffet On Main Lifestyle Centre 17th Avenue, tel: +27 (0) 41 367 2612;
Biza Internet Cafe, 1 Fountain Ave, Entertainment Village, Walmer Township, tel: +27 (0) 41 581 2472

Phonogram / Telegram: May be sent by dialling 1028 or from any Post Office.

Postal Information: Post Offices are open from 08h00 to 17h00, Mon., Tues., Thur. & Fri.; Wed. from 08h30 to 17h00 and 08h00 till 13h00 on Sat.
Main Post Office, 259 Govan Mbeki Avenue, Tel: +27 (0) 41 508 4039.

Public Telephones: Public coin and card telephones are fully automatic with direct dialling to most parts of the world. Phone cards may be purchased at any Post Office Branch. Booked international calls can be made by dialling 0903 for International Telephone Enquiries.

WorldCall Customer Service Centre: 0800 223 368

EMERGENCY NUMBERS

- Travel Experience (Agents for Automobile Association – International Drivers Licence, etc.), tel: +27 (0) 41 368 6452
- Emergency Roadside Assistance, tel: +27 (0) 86 100 234 / www.aa.co.za
- Alcoholics Anonymous (Eastern Cape Area), tel: +27 (0) 41 452 7328 (24 Hr Help Line)
- Ambulance, tel: 10 177
- Association for the Physically Disabled (PE), tel: +27 (0) 41 484 5426 / www.apdnmb.org.za
- Fire & Emergency Services, tel: +27 (0) 41 585 1555
- Gardmed Ambulance, tel: +27 (0) 41 373 6777, www.gardmed.co.za
- NMB Lifesaving, +27 (0) 72 525 6221 (Earl Ingram)
- NMB Lifesaving Clubs: New Brighton, Kings Beach, Seagulls, Hoabie Beach, Summerstrand, Sardinia Bay and
- Bluewater Bay Lifesaving Club tel: +27 (0) 82 341 8068, tel: +27 (0) 41 466 1054 (Dave Bamber)
- Netcare 911, tel: +27 (0) 82
- Netcare Greenacres Hospital Emergency Unit, tel: +27 (0) 41 390 7120 / 6
- Revive (previously Life Line) (PE), tel: +27 (0) 41 373 8882 (08h00 – 16h00 Crisis Counselling by appointment)
- National Sea Rescue Institute (N.S.R.I.), tel: +27 (0) 41 585 6011
- Police Flying Squad, tel: 10 111
- Port Elizabeth Weather Office, www.weathersa.co.za www.weathersa.co.za

MEDICAL MATTERS

- District Surgeon: Dora Nginza Hospital, Nurses' Residence, Uitenhage Road. Tel: +27 (0) 41 464 0600

Hospitals:

- Dora Nginza Hospital - Spondo Rd, Zwide, tel: +27 (0) 41 406 4111
- Netcare Greenacres Hospital - Ring Road, Greenacres, tel: +27 (0) 41 390 7120 / 6
- Livingstone Hospital - Standford Road, Korsten, tel: +27 (0) 41 405 9111
- Life Mercantile Private Hospital - Durban Road, Korsten, tel: +27 (0) 41 401 2700 / 404 0400
- Provincial Hospital - Gipson Street, Mount Croix, tel: +27 (0) 41 392 3911
- Life St George's Hospital - Park Drive, Central, tel: +27 (0) 41 392 6111, tel: +27 (0) 41 392 6034
- Life St George's Emergency Trauma Unit: tel: +27 (0) 41 392 6175 / 392 6180

Medical Services:

Visitors are responsible for their own medical needs and should obtain medical insurance prior to their arrival. Doctors are listed under "Medical" in the Telephone Directory.

- National Renal Care: Dialysis, (Peritoneal, Chronic Haemodialysis, Acute Haemodialysis - Hospitals). 289 Cape Rd, Greenacres, tel: +27 (0) 041 363 1052/ 3/ 4/ 46/ www.nrc.co.za
- Retina South Africa (East Cape Branch): 14 Pickering street, Newton Park, tel: +27 (0) 41 363 0164/+27 (0) 82 788 2796 www.retinasa.org.za, eastcape@retinasa.org.za



NETCARE GREENACRES HOSPITAL

Emergency Department:

(041) 390 7126 / 7120



Netcare 911: 082 911

Ambulances: 081 550 2246 / 081 584 4428

www.netcare.co.za

Netcare Greenacres Hospital
Cnr Cape & Rochelle Roads
Greenacres, Port Elizabeth, 6045
Tel: +27 (0) 41 390 7000
Fax: +27 (0) 41 390 7089



You're in safe hands

MONEY MATTERS

- Banks: Operating hours for commercial banks are Mon. to Fri. 09h00 to 15h30, Sat 08h30 to 11h00.
- First National Bank - 293 Cape Road, Newton Park, tel: +27 (0) 41 390 2800 (Voicemail - option 2) / www.fnb.co.za;
- ABSA Commercial Bank - Greenacres Shopping Centre Ring Road, Greenacres, tel: +27 (0) 41 502 1111 / www.absa.co.za;
- Standard Bank of SA Ltd. - 1 Pickering Street, Newton Park, 0860 123 000 / www.standardbank.co.za
- Nedbank - Greenacres, tel: +27 (0) 41 391 900 or 270 Cape Rd, tel: +27 (0) 41 393 5800 / www.nedbank.co.za
- Credit Cards and Travellers' Cheques: Most shops and hotels will accept all major credit cards as well as travellers' cheques.

Currency: The local currency is the South African Rand (ZAR) = 100 cents (c). Notes issued are R200, R100, R50, R20 and R10. Coins issued are R5, R2, R1, 50c, 20c, 10c and 5c.

Foreign exchange: Foreign currency may be exchanged at some Commercial Banks and Travel Agencies.
American Express Foreign Exchange - Boardwalk Casino Complex, tel: +27 (0) 41 583 2025 (Mon. to Fri. 09h00 to 20h00, Sat. to Sun. & Public holidays 10h00 to 16h00);
• Bidvest Bank - Shop 89, Walmer Park Shopping Centre, tel: +27 (0) 41 368 5890. (Open Mon. to Fri. 08h30 to 16h30, Sat. 08h30 to 12h30, closed Sun.)
• Bidvest Bank - Shop 3, Shoprite Entrance, tel: +27 (0) 41 363 1185. (Open Mon. to Fri. 08h30 to 16h30, Sat. 08h30 to 12h30)
• Imali Express - Arrivals Hall, PE Airport, tel: +27 (0) 41 581 2483. (Open Mon. to Fri. 06h00 to last flight, Sat. 07h00 to last flight, Sun. 07h00 to last flight)

VAT (Value Added Tax): South Africa has a Value Added Tax System of 14% on purchases and services. Foreign visitors can reclaim their VAT on collective purchases of more than R250.00.

FOR EMERGENCY, DIAL 10111 & 10177

Bay Language Institute

150 metres from the sandy beaches and warm Indian Ocean waters of Algoa Bay, Bay Language Institute is perfect for the language learning adventure of a lifetime. Our blend of small classes, great teachers, a warm, friendly environment, and easy access to amazing wildlife viewing, beautiful beaches, adventure and other activities, ensures an excellent mix of study and leisure. Contact us on info@baylanguage.com | +27 (0) 41 583 6113 | www.baylanguage.com



05 Visitors' Safety Tips



Tourists should take the same sensible precautions they would in any major city – always be alert and vigilant.

Safety on the Street:

- Avoid leaving belongings unattended.
- Avoid carrying large sums of cash and carry your wallet in an inside pocket or wear a money-belt
- Carry your camera/video camera, etc in a shoulder bag and not around your neck.
- Take special precautions in secluded areas (including parks and gardens and walks / trails), especially at dusk and after dark.
- Street children and beggars may approach you for a handout – Social workers counsel against giving money.
- It is better to explore in groups: there is safety in numbers.
- At night, park in a secure, well-lit area, stay clear of dark, isolated areas, rather stick to well-lit busy streets.
- Be aware that uniformed parking attendants will offer to safeguard one's car for a tip (small fee).
- Do not leave valuable belongings in your car; lock everything in the boot where they are out of sight.

Safety When Jogging or Cycling

- Jog or cycle with a companion.
- Restrict your activities to familiar locations and avoid secluded areas.
- Avoid participating in the late evenings.
- Always face the oncoming traffic
- If you think you are being followed, go to the nearest house and call the police.
- Wear brightly coloured clothing to improve visibility.
- Carry a whistle or shrill alarm to summon help if needed.
- Vary your route and routine.
- Stay away from bushes and alleys where attackers might hide.
- Always be aware of your surroundings and be ALERT.
- Do not carry valuables when jogging or cycling.
- Plan your route beforehand and let someone know where you are going, as well as what time you expect to return.

Safety Tips for ATM (Auto Teller Bank Machines) Users

- ATM users should take extra caution during the festive season/end of the week or month (pay day) because criminals are on the prowl, looking for easy pickings.
- Use ATMs you are familiar with or choose well-lit, well-situated ATMs, such as in shopping malls/centres.
- Do not go to ATMs laden with parcels and shopping, as one cannot concentrate fully on these, your transaction and bystanders all at the same time.
- Do not to accept help from strangers and never give your PIN code to strangers, even those who claim to be working for the banks.
- Be aware that criminals work in teams - one distracts you, while the other tries to steal the card and money
- ATM users should be on the lookout for foreign or suspicious devices attached to, or close to the ATM, that may be used to scan cards or read PIN numbers.
- If you suspect that you are being followed, get yourself to the nearest public place or police station as quickly as possible, or approach a police official.
- Beware of card swopping at ATMs and press Cancel should somebody try to distract you. Carry your card details (without the pin code) on you.
- Be cautious of scams where well-dressed strangers offer to phone the bank on your behalf on their cell phone. When your card gets stuck, they will invariably ask for your pin number. Your pin number is not needed to cancel a card.

06 Historical Heritage

Nelson Mandela Bay bears the rich legacy of an area that saw the first meetings of Khoisan, British, Dutch, German and Xhosa people. As the landing place of the 1820 Settlers, it offers a wealth of treasures in the form of historical attractions, museums and places of interest, guaranteed to provide a journey of discovery!

History of Port Elizabeth: The nomadic San were the earliest group of indigenous people known to live in the Eastern Cape. The forefathers of the isiXhosa speaking people arrived on the banks of the Kei River at about 800AD. While on his epic voyage of discovery searching for a sea route to the East, the Portuguese Bartolomeu Dias, rounded the "Cabo da Roca" in February 1488 and entered "Baia da Roca" – Cape and Bay of the Rock (now Cape Recife and Algoa Bay). Dias also gave the name "Ilheus Chaos" (Flat Islands) to the Bird Islands. In 1497, Vasco da Gama, successor to Dias, entered Algoa Bay on his voyage to India and noted the Bird Islands. His charts gave Cape Recife its name – "Cabo do Arricife" – Cape of the Reef. The "Bay" was later named "Baia de Lagoa" by navigator and cartographer Manuel de Mesquita Perestrelo in 1576, referring to the lagoon situated at the mouth of the Baakens River. Altogether 4 000 British Settlers arrived by sea in 1820, to become the first permanent British residents in the Albany District. On 6 June 1820, Sir Rufane Donkin, Acting Governor of the Cape Colony at the time, named the new sea port in memory of his late wife, Elizabeth. Before the up-country gold and diamond booms, PE developed into one of the major commercial cities in SA, trading in wool, mohair and ostrich feathers. As a result, the harbour became a bustling port.

The Donkin Heritage Trail: A 5km self-guided walking tour which links 51 places of historical interest including the 1820 Settler history and architectural delights of the old Hill area of central Port Elizabeth (Donkin Heritage Trail booklet sold at NMBT Donkin Visitor Information Centre, located inside the Lighthouse Cottage on Donkin Reserve, Tel: +27 (0) 41 585 8884)

Route 67: An Arts Culture Heritage Route depicting 67 public art works symbolizing Nelson Mandela's 67 years of dedication to the Freedom of South Africa. Some of which include: Welcome Carpet (a Quart Carpet with bead artwork which celebrates the diverse cultures of the Eastern Cape); Untitled (an untitled piece with the features and clothing on the female figure standing behind the chair, deliberately neutral which is meant as a conversation piece); River Memory (artwork of steel pipes which evokes the streamlet that once trickled down to the sea before it was land-filled, making way for what is now Donkin Street); Windward (sculptural benches which hint at Port Elizabeth's nautical history while the title refers to the city's popular name, the "Windy City"); Fish Bird (represents the returning back of the Donkin to take ownership of this transforming site).

Donkin Reserve: Belmont Terrace, Central. Donkin Reserve was proclaimed a public open space in perpetuity by Sir Rufane Donkin. It includes a stone pyramid monument, with a touching inscription, erected by Sir Donkin in memory of his late wife, Elizabeth, after whom the city was named. The Lighthouse, built in 1861, also houses the official Visitor Information Centre. Tel: 041 585 8884. Open Mon. to Fri. from 08h00 to 16h30; Sat. 09h30 to 15h30. At a nominal fee, the Lighthouse is opened to the public on request.

The Great Flag, which measures 12m x 15m, is the biggest in South Africa and it flies from the highest flagpole (60m) in the country. Piazza Mosaic is a 40m² mosaic set out between the Pyramid and the Great Flag which celebrates the multi-cultural, the heritages, the diverse histories and abundant fauna and flora that characterizes the city and the province. The Voting Line close by are life-size laser-cut steel figures which are symbolic of the 1994 first free democratic elections. GPS: 25 37'13.94" E - 33 57'43.92" S

The Campanile (meaning *bell tower* in Italian) in Strand Street, was erected at the entrance to the railway station and harbour to commemorate the landing of the 1820 British Settlers. The 53.5 m tower contains a chiming clock and the largest carillon of bells in the country. The observation room can be reached by climbing a 204-step staircase, offering a magnificent view of the harbour and surroundings. The Campanile Frieze is a series of sculpted visual images set into a cast concrete curved beam at the entrance which is a celebration of the indigenous heritage of the Eastern Cape area. Admission is by freewill donation. Open Mon. – Fri. 09h00 to 16h00 / Sat 09h00 – 15h00 / closed on Sunday. GPS: 25 37'30.13" E – 33 57'39.19" S

Prester John Memorial, in Fleming Square, adjacent to the City Hall, is dedicated to the mythical king-priest, Prester John, and the Portuguese seafarers who set out on an exploration of the South Africa coastline. The Monument consists of a large Coptic cross. In the central circle are the figures of Prester John and a Portuguese navigator. GPS: 25 37'25.34" E - 33 57'46.10" S

City Hall, Market Square (Vuyisile Mini Square), Govan Mbeki Avenue. The majestic-style City Hall was built between 1858 and 1862. The attractive clock tower was added in 1883. The City Hall currently serves as a meeting venue and offices for the Executive Mayor and the Municipal Manager. GPS: 25 37'25.40" E - 33 57'44.86" S

The Horse Memorial, located on the cnr. of Russell & Cape Rd., Central, was erected and dedicated to the horses killed during the South African War (1899 - 1902). The inscription on the memorial reads "The greatness of a nation consists not so much in the number of its people or the extent of its territory as in the extent and justice of its compassion". GPS: 25 36'31.79" E - 33 57'43.80" S

DID YOU KNOW?

Route 67 (Arts / Culture / Heritage Route) depicts 67 public art works symbolizing Nelson Mandela's 67 years of work dedication to the freedom of South Africa.

07 Port Elizabeth

Fort Frederick, located on the cnr. of Belmont Terrace and Fort Str. Central, is a stone fort built in 1799 by the British Forces to defend the mouth of the Baakens River. It was named after Frederick, Duke of York, and was built by English troops sent to Algoa Bay to assist the Graaff-Reinet rebels in preventing a possible landing of French soldiers. Yet, ironically, no shot was ever fired in anger from the Fort. Free Entry. GPS: 25 37'16.99" E - 33 57'59.43" S

Old Main Library is situated in the north-western corner of Market Square (now Vuyisile Mini Square). The first building on the site was constructed in 1835, and was used as a courthouse from 1854. The present building was officially opened in 1902 and is regarded as an excellent example of Victorian Gothic architecture. The majestic Sicilian marble statue of Queen Victoria, at the library entrance, was erected and unveiled in 1903.

PE Museum at Bayworld Beach Road, Humewood blends both the cultural and the natural history of South Africa. Marvel at the variety of displays, from prehistoric dinosaurs to ethnic beadwork, and a variety of historical treasures. Open Mon. to Fri. 09h00 to 16h30, closed on public holidays. Entrance fee charged. Tel: +27 (0) 41 584 0650. www.bayworld.co.za Closed on weekends & Christmas Day. GPS: 25 38'55" E - 33 58'39" S

No. 7 Castle Hill Museum: Built circa 1829 and located in Castle Hill Street, Central, this is regarded as one of the oldest surviving Settler dwellings in PE. Following renovations, the building was opened as a Museum in 1964. The interior of this charming family dwelling presents a picture of domestic life enjoyed by an English middle-class family in Port Elizabeth in the mid-19th century. Entrance fee charged. Open Mon. to Fri. 10h00 to 13h00 & 14h00 to 16h00. Closed on Weekends & Public Holidays. Tel: +27 (0) 41 582 2515.

South End Museum is managed by the Museum Trust and located on the cnr. of Humewood Road and Walmer Boulevard, South End. The Museum reflects a bygone era of the suburb of South End from as early as 1920 until the implementation of the Group Areas Act in the 1960's, which led to the destruction of the 'old' South End. Admission by freewill donation. Open Mon. to Fri. 09h00 to 16h00, Sat. to Sun. from 10h00 to 15h00. Website: www.southendmuseum.co.za Tel: +27 (0) 41 582 3325.

Prince Alfred's Guard (PAG) Museum located in Daly Street, Central, is a City Regiment founded in 1856 as the Port Elizabeth Volunteer Rifle Corps. Its name changed by Royal assent after it provided a Royal Guard for Prince Alfred, second son of Queen Victoria, on his visit to the City in 1860. Visiting hours Mon. to Fri. from 8am to 4pm, groups need to book in advance. Tel: +27 (0) 41 505 1251/1521. Admission by freewill donation. GPS: 25 37'15.28" E - 33 57'48.93" S

PE South African Airforce Museum is located on the southern side of the PE Airport, at the end of Forest Hill Drive, Southdene, in a restored WW2 hanger. The Museum boasts a total of nine aircraft, including the oldest surviving jet-fighter in South Africa. For museum information and guided tours contact Tel: +27 (0) 41 505 1295. Admission by freewill donation. Open Tue. to Thur. 08h00 to 15h00, Sat. 09h00 to 15h00, Sun. and 10h00 to 16h00. Closed on Fri. & Public Holidays: 1st Jan, 25, 26, 31 Dec. & Easter Weekend. www.saafmuseum.org.za GPS: 25 37'04" E - 33 59'22" S

Jewish Pioneers' Memorial Museum: Cnr Raleigh and Edwards Streets, Central. The museum is staffed purely by volunteers, who work during the week. The Museum is only opened on request, preferably with some notice and not Sat. (Jewish Sabbath) or on any Jewish holiday. Tel: +27 (0) 41 3792620 (office) / +27 (0) 82 655 3503 (Delia Groer)

The Cradock Four Memorial is located next to the Vullindlela Accommodation & Conference Centre, off the N2 highway and close to St George's Beach. Matthew Goniwe, Sparrow Mkhonto, Fort Calata and Sicelo Mhlauli (dubbed "true heroes of the struggle"), were abducted while travelling from Port Elizabeth to Cradock where they were assaulted, killed and their bodies and the vehicle in which they were travelling burnt on 27 June 1985. The memorial will eventually form part of the Freedom Trail. GPS: 25 38'29.31" E - 33 49'19.98" S

Van Der Kemp's Kloof: Bethelsdorp was established in 1803 by Dr Johannes Theodosius Van der Kemp. Attractions include the Church, first built in 1803 (rebuilt 1903 and 1926) in Church Street, the Market Square with the Mission Bell, erected in 1815; a square stone house, named the David Livingstone Cottage (a guest cottage where Dr David Livingstone is reputed to have stayed); and a row of Almshouses, built in 1822. GPS: 25 29'50.68" E - 33 53'14.11" S

Mendi Memorial, located in Mendi Road, New Brighton, commemorates the lives of the South African black labour contingent that died on the troopship "SS Mendi" after sinking off the Isle of Wight, near St. Catherine's Point on 21 February 1917. The "Mendi" sank after colliding with SS "Darro" in heavy fog. GPS: 25 35'52.26" E - 33 54'22.81" S

DID YOU KNOW?

The Great Flag is the Largest South African Flag, situated at the Donkin Reserve, hanging from Africa's second highest flagpole, the flag is the size of a tennis court.



Emlotheni Memorial Park located in Limba Road, New Brighton was dedicated to the memory of six anti-apartheid activists. Including trade unionist Vuyisile Mini, these were the first men to be executed for an act of defiance against the apartheid forces in 1964. The site on which the memorial rests has been a public square for years, often the place where defiance rallies took place. Emlotheni means a "lot" or "erf" in Xhosa. GPS: 25 35'44.27" E - 33 54'7.085" S

Red Location Museum: Cnr. Olaf Palme and Singaphi Street, Red Location, New Brighton. Built primarily as a tribute to the liberation struggle against apartheid, this "museum with a difference" embraces love, reconciliation and hope for the future amongst its aims (currently closed). GPS: 25 36'19.74" E - 33 53'51.11" S

Donkin Reserve Lighthouse

For over 21 years, Nelson Mandela Bay Tourism's Visitor Information Centre (VIC) has been housed inside the Lighthouse's Cottage (built in 1865) and is the curator for the free-standing Lighthouse (which was built in 1861).

For a nominal fee of R20, purchase a 500g Marina Salt Lighthouse Dispenser and climb the stairs of the lighthouse for FREE, to enjoy the best balcony view of the Bay from the top.

Free WiFi • Tel: +27 (0)41 585 8884
Website: www.nmbt.co.za
Open: Mon. - Fri. 09h00 to 16h00
Sat. 09h30 to 15h30

nelson mandela bay
TOURISM
NATURAL HERITAGE - CULTURAL - ECONOMIC

08 Despatch

Originally developed in 1942, Despatch is regarded as a relatively young town. Despatch officially obtained municipal status in 1945. The name of the town was derived from the brick industry, as it was from a railway siding (later known as "Hitler's Halt") in the late 1800's near Uitenhage, that the bricks were "dispatched" or rather, "despatched". Many of the older buildings and houses in Port Elizabeth and Uitenhage were built with these very bricks. Sadly, the brick business is now a remnant of the past. Offering the charm of a rural town in the heart of a city, Despatch currently has a resident population of approx. 40 000.

Despatch Museum: 1a Church Street. The interior boasts a mini model of the Stegosaurus, which was discovered in Despatch in. Alongside it, are examples of the original bricks produced in the town, as well as a further two models of beautiful, red brick chimneys built by a former town engineer. Numerous sporting memorabilia festoon the walls of the Museum as many well-known sportsmen originated from Despatch. These include six rugby Springbok blazers, along with the jackets of two South African cricket umpires and the running gear of a Comrades Marathon winner. Names such as Danie Gerber, Adri Geldenhuys, Rudi Koertzen and Charl Matthys, amongst others, are synonymous with Despatch. Cell: +27 (0) 82 305 9366 Curator (Attie Pretorius). Viewing by appointment. Freewill donations.

Despatch Chimney Brickworks: De Mist / Genot Streets. Built in 1882, the brick chimney was part of the once flourishing brickworks in Despatch. The monument has been restored and can be viewed, standing tall and serene in a field on the outskirts of the town, alongside the railway track. This is a viewpoint only. Prior visit to the Despatch Museum suggested.

DID YOU KNOW?

The name of Despatch was derived from the brick industry, as it was from a railway siding (later known as "Hitler's Halt") in the late 1800's near Uitenhage, that the bricks were "dispatched" or rather, "despatched".

09 Uitenhage

In 1804, JA Uitenhage de Mist, Commissioner-General of the Batavian Republic, instructed Captain Alberti to select a site for the new Drostdy (Eastern Cape District). As a result, Uitenhage was originally the headquarters of the Eastern Cape.

Enoch Mankayi Sontonga – Distinguished Son of Uitenhage (1872 – 1905) The man who wrote and composed *Nkosi Sikelel' iAfrika*. Born in Uitenhage, Sontonga was from the Mpinga clan of the Xhosa nation. He wrote the first verse and chorus of *Nkosi Sikelel'* and also composed the music in 1897. It was first sung in public in 1899. In 1994 it became part of South Africa's national anthem.

Langa Memorial: Located along Maduna Road, Uitenhage, the memorial marks the spot, just outside Langa Township, where Police opened fire on a crowd of mourners, killing 20, who were on their way to a banned funeral on 21 March 1985 (the 25th anniversary of the Sharpeville massacre of 1960). GPS 33°44'49.05" S - 25°23'24.46" E

Basuto War Memorial commemorates those who died in the Basuto Campaign from 1880-1882, and Morosi Mountain in 1879 and is in Magennis Park, Uitenhage. GPS 33°45'47.96S - 25°23'59.45" E

Cannon Hill Memorial: A monument, which is located on Cannon Hill, commemorating the coronation of King George V adorns Cannon Hill and is an excellent vantage point from which to view the town and surrounding area. GPS A33°46'1.32" S - 25°24'22.32" E

The Drostdy Museum (1809) which is situated at 50 Caledon Street, was erected during General Jacob Glen Cuyler's tenure of office as a Landdrost of Uitenhage in 1809. The Uitenhage Africana Museum is housed here. Tel: +27 (0) 41 992 2063. Entrance fee charged. Open Mon. to Thu. 10h00 to 16h00 and Fri. 10h00 to 16h00.

Cuyler Manor Museum: Built as a homestead for General Jacob Glen Cuyler, Landdrost of Uitenhage from 1806 to 1827, this Cape Dutch style house, positioned along the Old Uitenhage / Port Elizabeth Road has been restored and furnished in the style of its day. Tel: +27 (0) 41 922 0372. Entrance fee charged. Open Mon. to Thur. 10h00 – 16h00 and Fri. 10h00 to 16h00.

The Old Railway Station Museum (1875): Positioned in Market Street and built in the year of the opening of the railway from Port Elizabeth, this is reputed to be one of the oldest railway stations in South Africa. Tel: +27 (0) 41 922 8210. Entrance fee charged. Open Mon. to Thur. 10:00 to 16:00 and Fri. 10.00 to 15.00

Old Uitenhage Town Hall: Since the 1820's, residents lobbied to have the capital of the Colony relocated to Uitenhage. The Town Hall was built in 1882 in Market Street and the Public Building between 1896 and 1898 (now called Victoria Tower).

Anglo-Boer War Memorial: Located in front of the Town Hall in Uitenhage, this memorial was unveiled in 1904. The names of citizens from Uitenhage and the surrounding district, who died in the Anglo-Boer War are inscribed hereon.

DID YOU KNOW?

Enoch Sontonga composed and wrote the first verse and chorus of *Nkosi Sikelel' iAfrika* (1897) and was born in Uitenhage in 1872.

Groendal Wilderness Area lies at the eastern extremity of the Groot Winterhoek Mountains. The area, which can be accessed via Groendal Road, Kruisrivier Valley also provides for a range of recreational opportunities such as wilderness hikes, bird watching, etc. Reserve Manager, Groendal Wilderness Area, Tel: +27 (0) 87 086 2499. Bookings essential.

Nelson Mandela Bay Science & Technology Centre: Housed in the restored old railway workshops along Drostdy Street, this 4,000 m² facility incorporates nearly 100 interactive exhibits which allow children and adults to experience science, mathematics and technology in a fun and stimulating way. Tel: +27 (0) 41 991 5000. Entrance fee charged. Open Mon. to Fri. 08h00 to 16h30 and Sat. open on request. Closed public holidays. Group bookings essential. Casual visitors welcome without booking. NMBT's Uitenhage Info. Desk is located inside. Tel: +27 (0) 87 353 1734

Grave of Joseph Crowe V.C. – the first South African born recipient of the Victoria Cross: Joseph Petrus Hendrick Crowe was born in Uitenhage on 12 Jan 1826. In 1857 he served with the 78th Highlanders under Major-General Havelock during his historic march on Cawnpore. For his bravery in the storming and relief of Cawnpore, Lt. Crowe was awarded the Victoria Cross and promoted to Captain. He died in England in 1876 but his remains were exhumed and returned to SA in 1975. He rests in the MOTH Garden of Remembrance in Rich Street.

VW AutoPavilion located at 103 Algoa Road, Uitenhage, showcases the evolution of the Volkswagen Group South Africa. The displays capture Volkswagen's legacy with state-of-the-art technology. From cars that chronicle the past to an exciting look at the future; enjoy an epic expedition through the Place of Cars and Legends. Open weekdays 08h30 to 16h00, first Sat. of each month 10h00 to 13h00 (closed on public holidays). Entrance fee charged. Free VW factory tours also available, Mon. – Thurs. 09h00 OR 12h00, Fri. 09h00 (no weekend tours). Tel: +27 (0) 41 994 5941/3 www.autopavilion.co.za All factory tours on hold until Feb. 2018.



MEET THE BEETLES

Come and visit Volkswagen's refurbished AutoMobility and Heritage Centre

103 Algoa Road, Uitenhage (Follow the signs)

041 994 5941
www.autopavilion.co.za

AutoPavilion
mobility | technology | heritage

10 Wildlife & Nature



www.portelizabethphotographer.co.za

Nelson Mandela Bay is situated in a nature-lover's paradise, offering an unbeatable blend of seaside and African bush encounters, all in the malaria-free Eastern Cape. The Bay is within half an hour's drive of several internationally acclaimed game reserves, offering visitors a treasured experience of African wildlife.

Nelson Mandela Bay – Home of the BIG 7: Several private game reserves with luxury and up-market venues guarantee true safari cuisine, warm and friendly service and unforgettable game viewing. Only 35km from Port Elizabeth to the New South Gate of Camp Matyholweni, Sundays River, or 72km from the city centre to the Main Entrance, Addo Elephant National Park is the only wildlife reserve in the world that is home to the Big Seven (Lion, Leopard, Cape Buffalo, Elephant, Rhinoceros, Southern Right Whale & Great White Shark in the Marine Section). Game viewing options offered at private game farms, game parks and game reserves include the following:

Addo Elephant Lodge & Safaris, Zuurborg, Bookings: +27 (0) 83 283 2359
www.addoelephantlodgeandsafaris.co.za

Addo Elephant National Park, Addo tel: +27 (0) 42 233 8619, www.sanparks.org
Amakhala Game Reserve, tel: +27 (0) 41 502 9400 / +27 (0) 46 636 2750,
www.amakhala.co.za

Kariega Game Reserve, Kenton-On-Sea, tel: +27 (0) 41 581 2606 /
+27 (0) 46 636 7904, www.kariega.co.za

Koffyalaagte Game Lodge, Jansenville, tel: +27 (0) 49 836 9188,
<http://koffyalaagtegame lodge.co.za/>

Kragga Kamma Game Park, tel: +27 (0) 41 379 4195, www.kraggakamma.com

Kuzuko Lodge, Olivenfontein Farm, Kommadagga, Addo Elephant Park, tel: +27 (0) 42 203 1700 / +27 (0) 82 720 0808 (General Manager), www.kuzuko.com

Kwantu Private Game Reserve, Sidbury, tel: +27 (0) 42 203 1400,
www.kwantu.co.za

Lalibela Game Reserve, N2, 13 km after crossing the Bushman's River,
tel: +27 (0) 41 581 8170 / +27 (0) 87 550 1885, www.lalibela.net

Pumba Private Game Reserve, 15km from Grahamstown, tel: +27 (0) 41 502 3050 / +27 (0) 46 603 2000, www.pumbagamereserve.co.za

Schotia Safaris Private Game Reserve, N10, Paterson, tel: +27 (0) 42 235 1436 www.schotiasafaris.com

Seaview Predator Park, Seaview Road, tel: +27 (0) 41 378 1702,
www.seaviewpredatorpark.co.za

Shamwari Game Reserve, Paterson District, tel: +27 (0) 42 203 1111,
www.shamwari.com

Daniell Cheetah Project / Wild Cats World, R75, 40km from Uitenhage, tel:
+27 (0) 42 232 0539/082 8710 012, www.daniellcheetahproject.co.za



ADD TO KAROO ROUTE



Experience the Big 5 at Addo Elephant National Park
+27 3042 233 8000



Stand in awe at the Valley of Desolation in Camdeboo National Park & stay in the Lakeview tented Camp
+27 0544 887 5478







Go Cheetah tracking or take a guided morning walk at Mountain Zebra National Park
+27 (0)48 801 5700



Take a Game Drive, Explore 4x4 Trails or Walk the Fossil Trail at Karoo National Park
+27 0023 419 2828







GET YOUR WILD CARD FOR AMAZING BENEFITS

Easy online bookings: www.sanparks.org
Central Reservations: +27 (0)12 428 9111
reservations@sanparks.org | NMBT Tel: +27 (0)41 582 2575



Addo Elephant National Park: Situated in a malaria-free area, the Addo Elephant National Park is a key tourism destination in the Eastern Cape. Only 72 km from Port Elizabeth, it is the only Park in the world to be home to the BIG 7, namely: over 450 elephants, Cape buffalo, leopard, black rhino, lions, and great white shark and seasonal southern right whale in the marine section. The Park was originally established in 1931 to save the Eastern Cape Elephant from extinction. The Addo valley bushveld offers superb elephant viewing, whilst also providing sanctuary to a myriad of birds, spotted hyena, eland, kudu, zebra, red hartebeest, plus numerous other antelope species, smaller mammals and reptiles. Tel: +27 (0) 42 233 8619

The 5-Biome City: Nelson Mandela Bay represents a large percentage of South Africa's biological diversity in that it is a meeting point for 5 of the 7 South African Biomes (broad classification of vegetation according to the kinds of plants that occur in the area), namely the Thicket, Grassland, Nama-Karoo, Fynbos and Forest Biomes. The area also boasts a significant amount of endemic species i.e. species that are only found here and nowhere else in the world. Such a concentration of biomes, particularly within a city, is unparalleled in the world and results in an extraordinary diversity of landscapes, plants and animals.

DID YOU KNOW?

Nelson Mandela Bay represents a large percentage of South Africa's biological diversity in that it is a meeting point for 5 of the 7 South African Biomes (broad classification of vegetation according to the kinds of plants that occur in the area), namely the Thicket, Grassland, Nama-Karoo, Fynbos and Forest Biomes



@thelmandelphotography

Lalibela Big 5 Game Reserve

Conveniently situated only 1 hour from Port Elizabeth, visiting Lalibela is a delightful and informative experience. A stay at Lalibela includes morning & evening game drives by experienced game rangers, luxury accommodation & world class safari cuisine. Because half of Lalibela consists of the savannah grassland biome, we are able to sustain vast herds of antelope which, in turn, means we have the densest population of free-roaming lions in South Africa. Game drives on Lalibela are truly spectacular! For Enquiries/Reservations: stay@lalibela.co.za or Tel: +27 (0)41 581 8170 or www.lalibela.net

Pumba Private Game Reserve

Set in the malaria-free Eastern Cape, Pumba provides an intimate African Safari experience never to be forgotten. Experience the thrill of spotting Africa's Big 5, as well as the rare white lion, hippo, hyena, cheetah, giraffes and more. Water Lodge offers waterfront chalets overlooking Lake Cariega, while Bush Lodge is set on a floodplain with scenic mountain views, offering luxury thatch and glass chalets. Contact Central Reservations on +27 (0) 41 502 3050 or e-mail: reservations@pehg.co.za Website: www.pumbagamereserve.co.za

Kariega Game Reserve

Kariega Game Reserve is a 10,000 hectare privately owned malaria-free "Big-5" reserve situated in near Port Elizabeth, thus forming a natural extension to Cape Town. Family owned and managed, Kariega enjoys a dramatic landscape with 5 different eco systems and 2 major rivers. Prolific game viewing experience. Choice of 5 luxury lodges (4 and 5-star).

Tel: +27 (0) 46 636 7904 / E-mail: res2@kariega.co.za / Website: www.kariega.co.za

A STAY AT LALIBELA INCLUDES GAME DRIVES, ALL MEALS, LUXURY ACCOMMODATION AND ALL DRINKS

LALIBELA

+27 (0)41 581 8170
stay@lalibela.co.za
www.lalibela.net

Addo Wildlife

**Accommodation
Restaurant
Wildlife Centre
Nature Reserve
Game Drives**

www.addowildlife.com
Tel: 042 007 0079
E-mail: info@addowildlife.co.za



Pumba
PRIVATE GAME RESERVE & SPA
★★★★★

**WILDLIFE
DAY SAFARI**
Big 5

Only 1 hour from PE

Voted one of CNN's Top 10 'Best Safari Experiences' in the world

Tel: 041 502 3050
Email: reservations@pbg.co.za
Web: www.pumbagamereserve.co.za

Amakhala
GAME RESERVE

T: +27 (0)82 659 1796
T: +27 (0)41 502 9400

CENTRALRES@AMAKHALA.CO.ZA
WWW.AMAKHALA.CO.ZA

**Garden Route
NATIONAL PARK**
TSITSIKAMMA

South African
NATIONAL PARKS

**Experience the
HEART OF THE
GARDEN ROUTE**
Just 2 hours' drive from Port Elizabeth

- 1 Home of the famous Otter Trail
- 2 Kayak down Storms River Gorge
- 3 Camp next to the Indian Ocean
- 4 Explore mystical Forest Trails
- 5 Snorkel tidal pools & underwater trails

WILD BENEFITS FOR WILD CARD MEMBERS

Garden Route National Park
Tsitsikamma | Knysna | Wilderness

Book online at: www.sanparks.org
Tsitsikamma: +27 (0)42 281 1607

KAYAK & LILO ADVENTURE



CONTACT US



Storms River Mouth
TSITSIKAMMA

+27(0) 73 1300 869
+27(0) 76 9592 817

BOOK NOW! www.untouchedadventures.com

TSITSIKAMMA Canopy Tour

A TSITSIKAMMA EXPERIENCE YOU'LL NEVER FORGET!!

THE ORIGINAL CANOPY TOUR FIRST IN AFRICA!

TSITSIKAMMA Canopy Tour

031 442 1011

031 442 1011

031 442 1011

Sundays River Adventures

2 or 3-hour sandboarding (short boat trip to the dunes, lessons and equipment) 1½ or 2½ hour river cruise along the beautiful Sundays River Variety of watersports (15 minutes to 1-hour) Addo Elephant National Park Safaris (half or full day) Delicious food at A Taste of Africa Restaurant (Breakfast, lunch & dinner) Open everyday! Visit our website to book online now. E-mail: Karl.bookings@sundaysriveradventures.com Cell: +27 (0) 71 185 6565

Addo Cruises & Sand Sledding

Cruises and Sand Sledding Daily – Weather permitting. 2½-hour time slot to experience the breathtaking scenery of the Sundays River estuary and the magnificent coastal dunes. Also experience the optional must do activity of sand sledding on one of the world's largest coastal dune system. One of a kind adrenalin activity. Bookings Essential. Accommodation on request. Cell +27 (0) 82 465 4391 / +27 (0) 82 418 0776. Email: info@addocruises.co.za. Website www.addocruises.co.za

12 Great Outdoors Parks & Nature Reserves

Birdlife Eastern Cape: Nelson Mandela Bay and the surrounding areas including the Sundays River Estuary have many venues for interesting bird watching and excellent sightings are assured. The Birdclub have regular outings to Settlers Park on the first Saturday of the month starting at 08h00 and visitors are welcome. Tel: +27 (0) 41 582 3077 / Cell: +27 (0) 84 515 8425 Chairperson: Corné Erasmus OR Tel: +27 (0) 41 360 4025 Dave Brown. <https://www.facebook.com/BirdlifePortElizabeth/>

Hiking, Walks and Trails: An unbeatable variety of scenic walks and trails within the city boundaries, as well as coastal and country valley experiences, are available. Hiking trails include: Sacramento Trail, Guinea Fowl Trail, Roseate Tern Hiking Trail, Van Der Kemp's Kloof Trail, Aloe Hiking Trail, Bushbuck Trail, Van Staden's Wild Flower Reserve, Settler's Park, and Maitland Nature Reserve Trails.

Voetsac Hiking Club: Activities offered by the "Voetsac" hiking club range from easy day walks through to moderate and strenuous multi-day hikes in wilderness or along commercial hiking trails. Visitors, holiday makers and residents are welcome. Hikes are all led by experienced club members. <http://voetsachikingclub.co.za/>

Lady's Slipper Trail: Lady's Slipper is a 565m mountain peak, approx. 32 km from Port Elizabeth. It can be accessed by taking the Van Staden's Gorge Rd. from the R102, and following signs to Falcon Rock. The Witteklip mountain reserve is the property of the Mountain Club of South Africa and resembles an up-turned high-heeled shoe', with rocky peaks, pristine fynbos and magnificent quartzite outcrops. A permit @ R20 p/p is obtainable at Falcon Rock. Safe parking and ablution facilities are available, as well as a restaurant/pub for refreshments www.falconrock.co.za. Contact: Gary Gradwell (Owner of Falcon Rock) Cell: +27 (0) 83 327 3456 / Tel: +27 (0) 41 956 0151. www.epmcsa.org.za/hiking

Settler's Park: Howe Avenue off Park Drive, Central. Facilities in the 54-ha tranquil Settler's Park, include a flower display house, a Marquette of the 1820 Settlers' Statue, indigenous flora, rock pools with stepping-stones, short walks and grassed areas ideal for picnicking and birding.

Groendal Wilderness Area lies at the eastern extremity of the Groot Winterhoek Mountains. The area, which can be accessed via Groendal Road, Kruisrivier Valley also provides for a range of recreational opportunities such as wilderness hikes, bird watching, etc. Reserve Manager, Groendal Wilderness Area, Tel: +27 (0) 87 086 2499. Bookings essential.

St George's Park , located around Park Drive is the oldest park in Port Elizabeth. Established in 1860, St George's Park is spread over 73ha of pristine wooded parkland and comprises extensive plant collections and specimen trees. The Park incorporates the world-famous Port Elizabeth Cricket Club; the founder cricket club in South Africa, the oldest bowling green in South Africa named "Founders Green", the St George's Park Swimming Pool, Prince Alfred's Guard Memorial as well as the 1882 Victorian Pearson Conservatory, which was built for the cultivation of exotic plants, water lilies and beautiful orchids.

Island Nature Reserve is located approx. 25 km from Port Elizabeth and is accessed via the Seaview Road turn off on the national road (N2). The Reserve boasts tree species such as Outeniqua yellow-wood, white and hard pear as well as white milkwood. The Reserve offers numerous walks, as well as picnic sites and a braai area. Open Mon. to Thur. between 08h00 to 16h30, Fri to Sun. & Public Holidays 08h00 to 16h00. Entrance fee R55 adults, R25 children under 12. Tel: +27 (0) 41 378 1634 / Cell: +27(0) 78 473 0444 / +27 (0)87 287 9294 / (0) 79 496 7923.

Maitland Nature Reserve is located along Beachview Road. This 250-ha forest reserve has three marked trails passing through the forest. Birdlife is abundant and varied. The well-known and imposing Maitland's coastal sand dunes border onto the reserve.

Van Stadens Wild Flower Reserve is located off N2, Witteklip, 40km from Port Elizabeth. This 400-ha Nature Reserve protects rare and endemic plants and has two nature trails as well as picnic sites. The steep sides of the gorge and pass are well wooded in subtropical thicket, while the plateau is vegetated by fynbos. Birdlife is abundant and varied. Be sure to visit the traditional Xhosa umzi (homestead) and learn about traditional Xhosa culture. Open 07h30 to 18h00 in summer but close at 17h00 in winter (1 May to 31 August). No entry fees. www.vanstadens.co.za/

Cape Recife Nature Reserve is regarded as a prime bird-watching venue in Port Elizabeth. The 9km Roseate Tern Hiking Trail starts at the entrance gate of the Nature Reserve and offers beautiful unspoilt beaches, natural dune vegetation, rocky outcrops, a lighthouse built in 1851, an old military observation post, as well as a bird hide. Donkey Cart Rides within the Nature Reserve as well as visitations to the Cape Recife Lighthouse which was built in 1851 can be arranged by contacting Pine Lodge, tel: +27 (0) 41 583 4004

Baakens Valley and Dodds Farm: The Baakens River cuts through Port Elizabeth from west to east, with the protected areas bordering it forming a green lung for the city. The 7.5km Lower Guinea Fowl Trail follows the valley while trail runners and mountain bikers make use of the variety of paths through it. Picnic sites are available at Dodds Farm in Walmer.

Hopewell Conservation Estate

(25000-ha private Nature Reserve) located along Rietkuil Road off Old Cape Road, has several mountain biking and trail running routes available to sport enthusiasts 7 days a week. The trails are of varying lengths and intensities: 7km, 20km, 32km, 44km and 55km and take visitors through a variety of biomes, ranging from different types of grassy fynbos to valley bushveld in the kloofs and northern section of the property. All are welcome to use the trails on payment of a conservation entrance fee. The Hopewell Family Restaurant is well worth a visit. Tel: +27 (0) 41 450 0381



Experience this vast mountainous kingdom which presents awesome wilderness adventures, unique rock formations as well as boasts World Heritage Site status. The Kloof is a nature lover's paradise with numerous campsites, overnighting facilities and hiking trails. Come experience life at its unspoilt best.

For more information, go to
www.visiteasterncape.co.za



For bookings call Central
Reservations on 043-492 0881
or email reservations@ecpta.co.za

ADVENTURE PROVINCE
Eastern Cape
PARKS & TOURISM AGENCY

13 Beautiful beaches

Nelson Mandela Bay's pristine beaches are legendary with wide expanses of golden sands which are ideal for safe sheltered swimming and other water sport and beach recreational activities.

Blue Flag Status: Three beaches have again achieved the coveted Blue Flag Status for the 2017/18 season, namely: Humewood, Hobie and King's Beaches. Stringent Blue Flag requirements include excellent bathroom facilities, good sea water quality, an educational centre and well-trained lifeguards all of which are monitored by WESSA (Wildlife and Environment Society South Africa) on an ongoing basis. Summer water temperatures range from 18 to 21°C; and sea conditions are generally calm in the bay, except when the south-easterly wind blows. Professional lifeguards patrol most beaches during summer. Beach Manager's Office Tel: +27 (0) 41 506 1423

Northern Beaches: The Northern beaches provide superb angling and swimming opportunities, and include Brighton Beach, St George's Strand and Bluewater Bay which is within walking distance from the Swartkops River mouth.

Southern Beaches: Humewood, King's, Hobie and Pollok Beaches comprise the main beachfront area. King's Beach, a magnificent 1,6 km-long expanse of golden sand extending from the harbour wall to Humewood provides safe swimming, body surfing, sunbathing and long beach walks. Hobie Beach, incorporating Shark Rock Pier is preferred for swimming, sunbathing and body surfing. Humewood Beach, a favourite family beach, offers sheltered swimming, body surfing and shade under the promenade and sheltered sub-way. Surfers favour Pollok Beach, locally-known as "The Pipe", with its excellent waves and surfing opportunities.

McArthur's Pool and Leisure Centre is ideally situated along King's Beach Promenade adjoining onto King's Beach and is an outstanding water recreational facility. The Complex comprises two open-air warm freshwater pools, a larger swimming pool, changing rooms, a children's waterchute and splash pool. The pools are open in-season seven days a week, from 09h00 to 17h00 Tel: +27 (0) 41 582 5282 (Admission: R40 Adult, R30 Pensioner, R20 child under 12).

St Croix Island Marine Reserve: The three rocky islands comprising this 12ha reserve, St Croix, Brenton and Jahleel, are situated off the mouth of the Coega River in Algoa Bay. This reserve (not open to the public) was established as a breeding ground for the endangered jackass penguin.

DID YOU KNOW?

Three beaches in Nelson Mandela Bay have again achieved the coveted Blue Flag Status for the 2017/18 season, namely: Humewood, Hobie and King's Beaches.

SANCCOB Penguin Rescue Station (SA Foundation for the Conservation of Coastal Birds) is Port Elizabeth's marine bird rehabilitation and education centre situated in the Cape Recife Nature Reserve. The centre's purpose is to rescue and rehabilitate, as well as inform and educate the public through their different programs. Visitors may tour the marine rehab and education centre and experience nature through sight, sound and touch. Penguin feeding takes place at 14h45. Open Mon. – Sun. from 09h00 to 16h00. Entrance fee: Adults R30; Pensioners & children: R20. Tel: +27 (0) 41 583 1830. Website: <https://sanccob.co.za/>

Schoenmakerskop-Sardinia Bay Nature Reserve: Known locally as "Saards", Sardinia Bay is a marine reserve with an unspoilt coastline and crystal-clear water – perfect for diving, surfing, and scenic walks. Picturesque Schoenmakerskop offers picnic spots, coves and secluded tidal pools along the rocky section of the shore. Schools of dolphins and whales are frequently sighted.

Beachview Beach and Maitland River Mouth: Beachview Beach, near Seaview is unsafe for bathing, with its frequent strong rip currents and backwash. Maitland River Mouth is located at the foot of the famous Maitland dune "mountain" which is ideal for sand-boarding.

Van Stadens: An extensive lagoon, tall dunes and a river navigable by small boats form part of the Van Stadens River Mouth Resort. Recreational activities incorporate pedal boats, sand skiing and fishing. Tel: +27 (0) 41 776 1059

Sundays River Mouth: The villages of Cannonville and Colchester nestle on the banks of the Sundays River at its entrance into the Indian Ocean. It is tidal from the mouth to 17km upstream. The Sunday River Mouth is unique, as the river flows through the world-renowned Coastal Dune Fields.

Marine Life in Algoa Bay: Algoa Bay has a huge diversity of marine life that can be viewed all year round. Each year the "gentle giants of the ocean" are a familiar sight along the coastline and can easily be sighted from the shore in season. This includes Southern Right whale, which mates and calves between July and October each year in the large sheltered Algoa Bay. The Bay's calm conditions make it an ideal nursery for calving and feeding the young. Humpback whales pass by during June / July and again in November / December. The sardine-eating Bryde's whale is present throughout the year. Bottlenose dolphins, Cape Fur seals, gannets and cormorants are also common.

14 Wind & Watersport

A mecca for all beach and water sports enthusiasts, Algoa Bay offers unrivalled conditions, in addition to an abundance of action-packed activities throughout the year.

Canoeing: The 2-day Nukakamma PPC Canoe Trail is a 29km overnight round trip on the flat scenic waters along Sundays River that starts and ends in a little hamlet called Cannonville – situated just 30 minutes' drive north of Port Elizabeth. Check-in at no. 72 Aquavista Crescent and then continue down to the slipway where canoes will be waiting. Cell: +27 (0) 82 897 2859 / Tel: +27 (0) 41 468 0238. <http://greenflagtrails.co.za/canoe-trails/eastern-cape-canoe-trails/>

Charters / Boat Cruises: Unique boating experiences around Algoa Bay in the form of chartered tours with a touch of adventure, exploration and discovery are available for the intrepid mariner. Boat charters operate on a regular basis and offer breakfast-cruises, sea-, Bay- and sunset-cruises in Algoa Bay as well as specialized boat based Penguin Island and Whale & Dolphin watching cruises (seasonal).

- Raggy Charters, Tel: +27 (0) 41 378 2528 / Cell: +27 (0) 73 152 2277
E-mail: info@raggycharters.co.za Website: www.raggycharters.co.za
- Stampede Cruises, Tel: +27 81 7666 749 E-mail: info@stampedecruises.co.za
Website: www.stampedecruises.co.za
- Expert Tours, Cell: +27 (0) 72 142 0420 E-mail: info@epert-tours.com
Website: www.expert-tours.com
- Big John Fishing Charters, Cell: +27 (0) 82 578 9051
E-mail: john.allan@telkomsa.net

Alternative options are river cruises along the beautiful Sundays River Estuary, only 50km from the Port Elizabeth Airport.

- The Sundays River Ferry, Cell: +27 (0) 82 465 4391
Website: www.addocruises.co.za
- Maggie May Party Boat, Cell: +27 (0) 71 185 6565
Website: www.maggiemay.co.za

Learn2Surf – bookings through Oceanside Surf Store, located next to McArthur's Pool & Leisure Complex, Beach Road. Learn2Surf offers surfing lessons and have surf boards and stand-up boards to rent - bicycles may also be hired. Tel: +27 (0) 41 586 0000 / E-mail: oceanside.surfstore@vodamail.co.za



STAMPEDE CRUISES

EXPLORE THE BAY WITH US
AN EXPERIENCE TO REMEMBER

ECO MARINE SAFARIS AND CRUISES ON BOARD OUR 8FT CATAMARAN

| | | |
|--|---|--|
| Waterfront Cruise: 1.5 - 2 Hours R200pp Cruise from the Waterfront to the Cape Recife Marine Reserve and back. | Dynat Cruise: 1.5 - 2 Hours R300pp The Waterfront to the Cape Recife Marine Reserve and back. | |
| Islands Cruise: 3.5 Hours R400pp Visit all three islands and the largest island, which is the largest island in the world. | Custom Cruises Customise your own cruise. Contact us to assist you. | |

Nature and adventure on a spacious & stable catamaran
Light snacks and cold drinks provided on all cruises

Stampede Cruises | Algoa Bay Yacht Club | Port Elizabeth
+27 81 766 6749 • info@stampedecruises.co.za
www.stampedecruises.co.za
Prices may change without notice

3-4 hour Whale & Dolphin Watching Cruises

3 hour Penguin Island Cruises

1½ hour Beachfront Cruises

View our facebook page for latest ocean safari encounters
facebook.com/raggycharters
071 152 2277 • info@raggycharters.co.za • www.raggycharters.co.za

Raggy Charters

Pro Dive SCUBA DIVING

Guided Dives, Diving Courses & Snorkelling Excursions

Tel: 041 581 1144
www.prodive.co.za

Fishing / Angling: Surf, rock and deep-sea angling prospects are available along the beautiful Algoa Bay coastline. The “dolosse” scattered around the bay area and the Swartkops River are excellent angling-sites for novices and children. More experienced anglers can try the Cape Recife Nature Reserve, as record catches of musselcracker, elf and hottentot have been recorded in the area. A major angling event is the Algoa Bay Tuna Classic competition, which attracts locals to the harbour annually. (Permits for fishing may be purchased from the Main PE Post Office). In addition, full-day deep-sea game fishing cruises / charters are also available and can be tailor-made by contacting:

- Big John Fishing Charters, Cell: +27 (0) 82 578 9051
E-mail: john.allan@telkomsa.net

Sailing / Yachting: Algoa Bay has near perfect sailing conditions. The Redhouse Yacht Club offers safe, protected river sailing. The Port Elizabeth Beach Yacht Club has its clubhouse at Hobie Beach and caters for Hobie Cats as well as a variety of other watersports. The Algoa Bay Yacht Club, is located at the Dom Pedro Jetty, Port Elizabeth Harbour and caters for the deep-sea keeler enthusiasts. Tel: +27 (0) 41 585 4058
E-mail: management@abyc.org.za / Website: www.abyc.org.za

Scuba Diving: The reefs in Algoa Bay are widespread, providing scuba divers with a diverse range of dive sites. The reefs are teeming with fish life, soft corals and a variety of marine life, not to mention the pinnacles and drop offs that range from ten to thirty metres. Basic resort courses, as well as the full range of scuba instruction, charters and hiring of diving equipment are offered by Scuba Diving Outfits.

- MTC (Marine Training & Consulting), Tel: +27 (0) 41 581 5121 /
Cell: +27 (0) 61 076 4113 E-mail: info@mtcpe.co.za /
Website: www.watersportmtc.com
- Pro Dive, Tel: +27 (0) 41 581 1144 E-mail: dive@prodive.co.za
Website: www.prodive.co.za
- Dive Expert Tours, Cell: +27 (0) 72 142 0420 E-mail: info@epert-tours.com
Website: www.expert-tours.com

Splash Waterworld @ Supertubes is a water park located on an enclosed grass area on Kings Beach, Humewood. Park attractions include a Super Tube, a Lazy River Ride, a Speed Slide and a Kiddies Slide, Open 10h00 to 16h30 weekends, until mid April. Open daily in Dec. (except Christmas & New Year). Cell: +27 (0) 73 238 6364 Website: www.splashwaterworldpe.co.za

Open Water Swimming: With a sheltered bay and three beaches being awarded Blue Flag status for the 2017/18 season, Nelson Mandela Bay offers awesome open water swimming conditions. This is encouraged through the annual Ocean Racing Series event which is a 12-race Series beginning in November and is held at Hobie Beach on alternate Sunday mornings through to the end of April. Visitors welcome. Tel: +27 (0) 41 484 7860
Website: www.zsports.co.za/ors / www.oceanracingseries.com
E-mail: info@zsports.co.za

15 Dolphin Capital



Algoa Bay Hope Spot: Algoa Bay, situated on the East Cape coast of South Africa, is famous for its natural beauty, biodiversity of marine habitats and rich marine life. The Bay incorporates two island groups and is home to the largest colonies of African Penguins. It is a protected refuge to calving whales, large pods of bottlenose dolphin and humpback dolphins. Visiting orcas are often spotted. The annual migration of millions of sardines is announced, and celebrated, by blue-eyed Cape Gannets, game fish, dolphins and sharks. Algoa Bay is also home to a wide variety of sharks, such as ragged tooth, pyjama and leopard catshark (endemic to South Africa) and is a nursing ground to ragged tooth, great white and smooth hammerhead sharks. It is recognized as one of the world temperate biodiversity hotspots and candidate for Mission Blue Hope Spot status, launched by Dr. Sylvia Earle in 2014. This confirms the area's uniqueness and biodiversity of Marine habitats. (Mission Blue is a Sylvia Earle Alliance initiative to ignite public support for the protection of Hope Spots. These are special conservation areas, vital and critical to the health of the ocean. This is done by creating a global network of marine protected areas to safeguard 20% of the ocean by 2020.)

Scientific evidence supports the Bottlenose Dolphin Capital:

Scientific Research conducted in the 1990s by a cetacean scientist, (Dr. Vic Cockcroft, Centre for Dolphin Studies). Approx. 20 000 Indo-Pacific Bottlenose Dolphins (*Tursiops aduncus*) inhabit Algoa Bay. In a recent study of Algoa Bay's Indo-Pacific bottlenose dolphin population, Ryan Reisinger and Leszek Karczmarski used photographic identification data, over three years, to accurately identify 1 569 individual dolphins by distinctive markings. It was concluded that the 'largest population estimate to date for this species were found along the South African Coast'. This suggests that more bottlenose dolphins inhabit the Algoa Bay region than along the rest of the South African coast. Reisinger & Karczmarski, 2010.

Bottlenose Dolphin Facts: Bottlenose dolphins get their name from their distinctly bottle-shaped beaks. This genus has three different species, with the Indo-Pacific species most commonly found in Algoa Bay. These dolphins grow to up to 2.6m and weigh a maximum 230kg. Their top surfaces are dark grey, with almost-white bellies; these become spotted as they age. They are as inquisitive as humans, often coming close to boats and bow-riding the waves created. Bottlenose dolphins can dive up to 300m and hold their breath for up to 20 minutes. However, they are often found in shallow waters (maximum 30m deep) and dive for three to four minutes. Often found in groups of up to 400, they sometimes join other schools, forming larger groups of up to 1,500. In Algoa Bay, dolphin pods are frequently sighted along the beachfront.



History of IRONMAN

In 1978, US Naval Commander John Collins and his wife Judy decided to issue a challenge to see which athletes were the toughest: swimmers, cyclists or runners. He proposed combining Oahu's 2.4 mile rough water swim race, 112 mile bike race and 26.2 mile marathon.

Competitors, including Collins, traveled to Waikiki to take on the first-ever IRONMAN Triathlon challenge. Since the inception, athletes have proven that ANYTHING IS POSSIBLE by crossing IRONMAN finish lines at the world's most challenging endurance races.

What is Triathlon?

A triathlon is a multiple-stage competition involving the completion of three continuous and sequential endurance disciplines namely swim, bike, run.

- IRONMAN® 70.3®: Previously known as the Half IRONMAN®, the IRONMAN® 70.3® consists of a 1.8km swim, 90km bike and 21.1km run. The total distance covered is 70.3 miles, hence the name change to IRONMAN 70.3.
- IRONMAN®: This endurance triathlon consists of a 3.8km/2.4miles swim, 180km/112miles bike and 42.2km/26.2miles run. The total distance covered is 140.6 miles/ 226km.

Why Nelson Mandela Bay?

Named after world icon Nelson Mandela, his legacy of reconciliation and togetherness thrives in the "friendly city". The name of Nelson Mandela evokes respect for humanity, diversity and the desire for a better world for generations to come. Nelson Mandela Bay embraces Mandela's spirit of freedom and liberty for all, his deep sense of humanity and the passion for life in its fullest measure. Hosting the IRONMAN 70.3 World Championship in Nelson Mandela Bay will open many more doors and help the city grow its sporting city prominence.

About the IRONMAN 70.3 World Championship

- 4500 athletes are expected to qualify from over 104 races around the world
- Each athlete usually travels with 3 to 4 support crew, family, sponsors and more
- Athletes will be coming from all over the world – 29% Europe, 24% North America, 18% Asia-Pacific, 11% Latin America, 8% South Africa, 4% Middle East and 6% other (92% of the field will be international).
- Well over R300 million is expected to be spent in Nelson Mandela Bay
- Most visitors will spend between 10 and 14 days in South Africa with an average of 202 500 bed nights.
- TV coverage for a global event of this nature runs into millions
 - The event will leave behind a long lasting Triathlon legacy in development and infrastructure
 - The event in Nelson Mandela Bay will take place on 1 and 2 September 2018
 - Female professionals and female age groupers will race on Saturday 1st September



- Male professionals and male age groupers will race on Sunday 2nd September
- There are many side events that will take place leading up to the main race days
- An expo will run for the duration of race week with an expected 70 stands
- The United States hosts the highest number of IRONMAN 70.3 events

IRONMAN 70.3 World Championship by numbers:

- 70.3 MILES/ 113.1KM Triathlon
- Over 104 annual qualifying events
- Over 150 000 hopefuls set out to qualify
- Only 4 500 athletes qualify
- 2 days of racing
- 100 000 spectators
- 4 000 Volunteers

What are the opportunities?

- Tourism opportunities pre and post race, with various packaged tour experiences unique to Nelson Mandela Bay and the Eastern Cape (Everything from Township tours, City Tours, Ocean Tours and Safaris).
- South African Hospitality showcased to the world
- Providing of specific services, resulting in many different job opportunities
- Crafts, resulting in many traditional crafters having a large international market to sell to and the possibility of international trade and investments.
- Entertainment offerings on a variety of levels and in all geographical areas due to the demand for many different experiences.

- Various investment opportunities from foreign investors
- Awareness of various charities supporting underprivileged children, which could lead to large donations through well run and registered NPO's
- Knock on effect from entertainment, tours and accommodation. Meaning all businesses and suppliers that are related to this industry will benefit (ie: laundrettes, industries that supply food, cleaning materials etc)

IRONMAN SOUTH AFRICA CONTACT DETAILS:

www.ironman.com

Tel: +27 41 581 7990



IRONMAN 70.3
WORLD CHAMPIONSHIP
IRONMAN 70.3 South Africa

17 Sports Scene

Nelson Mandela Bay is notably a sporting enthusiast's destination, because of its superb weather and excellent and varied sporting facilities. In addition, the city has many active sports clubs catering for bowls, golf, tennis, badminton, squash, volleyball, pool, darts, athletics and cycling, as well as seasonal sports, such as soccer, rugby, hockey, roller hockey, cricket, motor racing and many more.

Cricket: A cricket club was initially started in 1843 at St George's Park and, in 1859, the new Port Elizabeth Cricket Club was granted land that it still occupies within the Park boundaries. In 1889, the first South African cricket test match against England took place there. Port Elizabeth is home to Eastern Province Cricket and boasts the internationally-recognised Axxess St George's. Tel: +27 (0) 41 585 1646 or E-mail: functions@cricket.co.za

Cycling: Established in 1990 (formerly Eastern Province Veteran & Ladies Cycling Association), the Masters and Ladies Cycling Club of Port Elizabeth is open to all males 30 years and older and females 10 years and older. Affiliated to East Cape Cycling, the club arranges road races during the summer season and placement into groups is based on a handicap system. Cell: +27 (0) 84 554 5376 or e-mail: admin@masterspe.co.za Website: www.masterspe.co.za

Road Running: Favourite haunts for running fanatics include Humewood Beachfront Promenade and St George's Park. Interested road-runners wishing to participate in fun-runs, training runs, trail or road running events may contact Eastern Province Athletics for fixtures. Tel: +27 (0) 41 374 2818 or email: epa@pe.co.za www.facebook.com/Eastern-Province-Athletics-216496225202949/



DID YOU KNOW?

St. Georges Park is closely associated with sport and several Port Elizabeth 'firsts'. In 1859, the PE Cricket Club was granted land within the park boundaries, a privilege it maintains today. The PE Lawn Tennis Club was founded here in 1879 and the first Bowling Club in 1882. In 1889 the first South African cricket test match against England took place in the Park and in 1891 the first rugby test.



FAIRVIEW RACECOURSE

Thoroughbred horseracing takes place weekly at Fairview Racecourse in Nelson Mandela Bay.

We offer various dining options and invite corporates, charities and groups to join us for a thrilling afternoon's racing.

We also offer a stunning upmarket wedding and function venue.



For further information please contact:
Fairview Racecourse, Draaifontein Road, Greenbushes
Tel: 041-372-1859, Email: karin@phumelela.com

THIS IS WHERE
**WE
HOST TO
IMPRESS**

CALL US ON: 041 408 8900/33/50
www.nelsonmandelabaystadium.co.za

- 1 Nelson Mandela Bay Stadium, Port Elizabeth
(<https://www.facebook.com/NMBSStadium/>)
- 2 NMBS Stadium
- 3 nmb_stadium

#OURSTADIUM

STADIUM
nelson mandela bay



Golf: Nelson Mandela Bay has a great selection of excellent quality coastal and inland golf courses. The area features some wonderful geological and climatic conditions which considerably enhance the challenge and excitement of playing golf. This is especially true along the coastal margin, where there are many undulating courses with a variety of winds coming from the Indian Ocean which adds to the unpredictability of your day's play. Notable course include: • Humewood Golf Club, Marine Drive, tel: +27 (0) 41 583 2137 Website: www.humewoodgolf.co.za • Port Elizabeth Golf Club, Westview Dr, Mill Park, tel +27 (0) 41 374 3140 Website: www.pegc.co.za • Walmer Golf Estate, 79 River Rd Walmer, tel: +27 (0) 41 581 1613 Website: www.walmergolfestate.co.za • Wedgewood Golf Club, Wedgewood Golf Estate, Old Cape Road, Greenbushes, tel: +27 (0) 41 450 9595 • Sardinia Bay Golf & Wildlife Estate, Heron Rd., tel: +27 (0) 41 366 1069 Website: www.sardiniabayestate.co.za • Golfing enthusiasts can contact Peter Joseph from SA Guided Tours for a par round in Nelson Mandela Bay, cell: +27 (0) 82 930 0768.

Rugby: The Southern Kings are a South African Rugby Union franchise for the Eastern Cape based at the iconic Multi-purpose Nelson Mandela Bay Stadium. For more information about fixtures, contact Eastern Province Rugby, Tel: +27 (0) 41 408 8900 Website: www.skings.co.za

Soccer: Being a game of skill and co-ordination, is regarded as "the game of the people". The main venues being • Gelvandale Stadium, Liebenberg Rd., Gelvandale • Westbourne Oval, Westbourne Rd., Central • Moore Dyke Playing Fields, Schauder and Gelvandale Playing Fields, Stanford Rd. Website: www.pefa.co.za/Fixtures.aspx

The Nelson Mandela Bay Stadium: The stadium, a legacy from the 2010 FIFA World Cup™ games is located in the heart of Port Elizabeth. It has an eye-catching, unique and impressive roof structure and design suited to high wind speeds. It offers a spectacular view overlooking the popular North End Lake to the north and the ocean which is one km to the east. The building is approx. 40m high from the field level to top of roof and consists of six levels in the West Stand and five levels in the North, South and East Stands. This is the only stadium located between two water masses. With a seating capacity of 44 000, the roof is symbolic of a sunflower opening to bloom. Tel: +27 (0) 41 408 8900 Website: www.nmbstadium.com

Horseracing Entertainment

Come and experience the rush of live horseracing weekly at Fairview Racecourse, conveniently situated in Greenbushes down the road from the Bay West Mall. We offer various dining options plus have stunning venues available for your special event. Further information Tel: +27 (0) 41 372 1859 or E-mail: karin@phumelela.com

18 Culture & Heritage Experiences



Nelson Mandela Bay's "Townships" are steeped in rich social history, tradition and culture. A legacy of apartheid, their origins have flourished from modest beginnings into hubs of activity and social life which is reflected in the food, music, religion and traditional practices. The feeling of "Ubuntu" (meaning 'Humanity' in Xhosa) surrounds their very existence.

Creation of Unique Township Tapestry

- Walmer Township – Port Elizabeth's first township formed part of the Welbedaght farm before it was laid out as a township by Mr McDonald, a government surveyor in 1851.
- New Brighton – The Township grew around the railway station built in 1877. It includes Red Location, White Location, McNamee, Boastville, Elundini and Kwa Ford. Red Location is a settlement of mostly tin shanties. The name originated from the oxide colourant used to protect the corrugated iron structures and roofs from rust, which have become a trademark in the area. After the war the "Blacks" from Bubba's location were housed here. White Location was the first economic housing scheme that was built there after the Urban Areas Act of 1923. Africans from Stranger's Location, Russell Road and Coopers Kloof located here by 1904.
- Kwa-Zakhele – Meaning "place to build yourself" in Xhosa, was established in 1956. Its families moved in from Korsten, a nearby mixed-race township.
- KwaMagxaki – Was established in 1985 and is the second highest income suburb occupied mainly by a diversified group of professionals, business people and civil servants.
- Kwa-Dwesi – Was started during the late 1980's, it is also occupied mainly by a mixture of professional business people and civil servants.
- Zwide – Named after Fair Hansen Manching Zwide, the principal of the Bethelsdorp Coloured Primary School. Mr Zwide was a community leader and was elected onto many committees and forums.
- Swartkops – Formerly Zwartkops, a village on the farm Fishwater Flats.
- Motherwell – A recent Township formed in the late 1980's to accommodate the expanding population. It is the largest township in the Port Elizabeth region.

Informal Street Vendors: As the informal sector develops, roadside hawkers are ever increasing their supply of wares. These range from fresh fruit and vegetables to clothing garments, wooden and beaded wire African Crafts. The most popular vending areas extend along the main beachfront promenade, Govan Mbeki Avenue as well as in front of Builders Express, cnr. Main Road & Eighth Ave., Walmer.

Social, Political and Historical Tours: Visitors keen to explore South Africa's politics and history may opt for a choice of organized social, political and historical tours. These outings unveil how history evolved, taking into account the limitations applied in the past. They encompass diverse peoples and their cultures and incorporate a visit to the historical townships, demonstrating the impact of the apartheid era on the city. On tour, one may experience a spirit of optimism and observe what and how cultures adapted.

Shebeen Tours

Shebeens (informal drinking halls) were once 'illegal' because they were not licensed to sell liquor, but have now become (legally) a lively cross between social clubs, a bar and a general meeting place. Shebeens offer informal venues with a relaxed atmosphere where patrons can unwind, especially during the evenings and weekends. Some well-frequented Shebeens include:

- Barbara's Lounge, KwaZakhele, cell: +27 (0) 79 694 0806
- Patido's Pub & Grub, New Brighton, cell: +27 (0) 82 928 9501
- Vusi's Jazz Bar, Walmer Location, cell: +27 (0) 78 223 3246
- Monde's Tavern, cell: +27 (0) 73 580 6500 / +27 (0) 72 710 1251 Lonwabo
- Jeya's Jazz Corner Tavern, New Brighton, cell: +27 (0) 72 555 2582 / +27 (0) 72 252 5815

Eastern Cape Map



Nelson Mandela Bay offers a mosaic of creative and unique art centres and galleries which showcase a variety of locally produced artwork. View www.artsjourney-nelsonmandelabay.co.za/

ARTEC: A community art gallery and support centre in 36 Bird Str. for the Eastern Province Society of Art and Craft (EPSAC). Open Mon. to Fri. from 09h00 to 16h00 and Sat. 09h00 to 13h00, Tel: +27 (0) 41 585 3641. E-mail: gallerie@artecpe.co.za Website: www.artecpe.co.za

Underculture Contemporary – Fine Arts Gallery: Located at 98A Park Drive and promotes quality contemporary fine arts from selected emerging artists. Tel: +27 (0) 41 373 0074 Website: www.underculturecontemporary.co.za/

Galerié NOKO: An accessible art gallery located along 109 – 111 Russell Road, Richmond Hill for visual arts, exhibitions and interpretations of art – and development of public understanding / appreciation of art. Tel: +27 (0) 41 582 2090 E-mail: galerienoko@gmail.com Website: www.galerienoko.com

The Art Gallery on Stanley: An evolving space in Stanley Street that combines fine art with décor and showcases Eastern Cape talent. Tel: +27 (0) 82 933 3158

Art on Target: Art gallery and art school at 2 Target Kloof. Tel: +27 (0) 41 373 3334 / Cell: +27 (0) 83 728 5295 E-mail: info@artwork.co.za

The Athenaeum: Located at 7 Belmont Terrace, the Athenaeum encompasses 'The Little Theatre' as well as an exhibition gallery which has become a renewed creative hub and focal point for showcasing the city's and the Eastern Cape's art, culture, creativity and heritage offering. Tel: +27 (0) 41 585 1041 E-mail: manager@theathenaeum.co.za Website: www.theathenaeum.co.za

GFI Art Gallery
Passionate supporters of the Eastern Cape, the Gutsche Family maintain the Gallery in order to promote pride in the city and enjoyment in the arts. As well as hosting exhibitions, the Gallery houses the Ron Belling Military Aviation Collection and always has a fine selection of artworks available for sale. Tel: +27 (0) 41 586 3973 E-mail: gfi@mweb.co.za Website: www.gfiartgallery.com www.facebook.com/GfiArtGallery/





The Nelson Mandela Metropolitan Art Museum is home to a comprehensive collection of South African art and craft and specialises in the art of the Eastern Cape Province. Through a dynamic schedule of temporary exhibitions the Art Museum aims to educate and entertain visitors.



OPENING TIMES:

Weekdays from 09h00 – 17h00

Entrance free, except for events with advertised fees

CONTACT DETAILS:

1 Park Drive, Port Elizabeth 6001

T: +27 (0)41 506 2000

F: +27 (0)41 586 3234

Website: www.artmuseum.co.za

Email: artmuseum@mandelametro.gov.za

Visit our facebook page



nelson mandela bay
MUNICIPALITY



WE STOCK A WIDE VARIETY OF AFRICAN CRAFTS AND ART

Mon-Fri: 8:30am – 4:45pm

Sat: 9:00am – 12:45pm



CONTACT US

T +27 (0) 41 585 1185

C +27 (0) 82 893 7905

E info@wezandla.co.za

W www.wezandla.co.za

F www.facebook.com/wezandla

A 37 Parliament Street, Central,
Port Elizabeth.



You will find us at our new address as of 1 November 2017



The Flea Market is situated on the walkway between Kings Beach and the McArthur's swimming pools in Beach Road.

Open Sundays from 08h00 to 17h00. The Market has the largest varieties of art, craft and curios for tourist visiting the Nelson Mandela Bay. Contact Johann cell 0834156144.



LUXURIOUS MOHAIR & WOOL AT FACTORY SHOP PRICES

THE
MOHAIR & WOOL

— FACTORY SHOP —

PRIDE OF PRODUCTS IN NELSON MANDELA BAY

Cnr. 5th Avenue & Heugh Rd, Walmer

T: +27 (0) 41 581 0079

E: walmershop@hinterveld.com



From 'market style' shopping to craft browsing for authentic local arts and crafts or upmarket boutique and mall shopping, Nelson Mandela Bay caters for a wide spectrum of shoppers. Facilities range from small suburban complexes to sizeable all-encompassing city malls and upmarket boutiques. A limited variety of speciality stores are conveniently scattered at interesting sites around the city.

Shopping Malls: Nelson Mandela Bay boasts several well-designed trendy retail shopping outlets which are located in popular areas. Most shops are open from 09h00 to 18h00 weekdays with extended shopping hours on Saturdays and Sundays.

- The Bridge Shopping & Entertainment Centre, Greenacres, tel: +27 (0) 41 363 8914
- Greenacres Shopping Centre, Greenacres, tel: +27 (0) 41 363 0791
- Walmer Park Shopping Centre, Walmer, tel: +27 (0) 41 368 2690
- Moffet on Main Lifestyle Centre, 17th Avenue, tel: +27 (0) 41 367 1308
- Pier 14 Shopping Centre, North End, tel: +27 (0) 41 484 1228
- Summerstrand Village Shopping Centre, Summerstrand
tel: +27 (0) 41 583 4052
- Walker Drive Shopping Centre, Sherwood, tel: +27 (0) 41 360 4055
- Colchester Shopping Centre (Spar), Colchester, tel: +27 (0) 41 468 0107
- Sixth Avenue Shopping Centre, Walmer, tel: +27 (0) 41 581 1654
- Metlife Plaza Shopping Centre, Kabega Park, tel: +27 (0) 41 360 4100
- Sunridge Village Shopping Centre, Sunridge Park, tel: +27 (0) 41 360 9442
- Kings Court Shopping Centre, Buffelsfontein Road, Walmer, tel: +27 (0) 41 368 1762
- Baywest Mall, 100 Baywest Boulevard, Hunters Restreat, tel: +27 (0) 41 492 0330

Speciality Shops: A few select authentic speciality / novelty shops may be explored at leisure. Richmond Hill has developed into one of the premier dining out districts in Port Elizabeth with many excellent restaurants, coffee shops and deli's opening up all over the area. In Uitenhage, notable antique haunts are located along Cuyler & Caledon Streets • Wezandla (African Craft Traders), 37 Parliament Str., Central, tel: +27 (0) 41 585 1185 • Old Curiosity Shop, 8 Lawrence Str., Central (move to 256 Main Road, Walmer in Apr. 2018), tel: +27 (0) 41 586 4786 • Second Time Around, 23 Kragga Kamma Road, tel: +27 (0) 41 372 1763 • Elephant Walk Antique Shoppe, Cows Cnr, Colleen Glen, Cell: +27 (0) 82 920 8656 • Elephant Walk Farm Shoppe, Cows Cnr., Colleen Glen tel: +27 (0) 41 372 1270 • Aya's Ceramic Studio, 90 Gunguluza Street, New Brighton, tel: +27 (0) 83 546 6234 • Mastertons, Purveyors of Fine Coffee, 114 Russell Rd. & 69 Parliament Str., Central, tel: +27 (0) 41 585 4044 • Grass Roof Farm Stall, Bakery & Deli, Cnr New Seaview & Heron Rd., tel: +27 (0) 41 366 2379 • Shwabz KwaSintu (African Curio Shop), KwaDwesi Township across Ziyabuya Mall, Mkwenkwe Str., Cell: +27 (0) 79 186 4491 • Cuyler Butchery (Premium Meat Products), 136 Durban Str., Uit., tel: +27 (0) 41 992 4649 • Wonzani Art Gallery (African Arts & Crafts), 27 Baakens Str., Central, tel: +27 (0) 41 582 1513 • Camden (Retail Gift Shop), 7 Raleigh Str., Richmond Hill, tel: +27 (0) 41 582 5107

Oceanside Surf Store

We sell top range magazine sport illustrated swimwear including Seafolly, Moontide, Billabong and lots more. Stock range includes men's, woman's and kiddies beach clothing, surf style jewellery as well as beach accessories such as hats, sun block, shoes, bags and toys for kids. We sell / rent stand-up boards & skate boards, rent bicycles & rollerblades and offer surf lessons. Located at No. 1 McArthur Pool & Leisure Complex, Beach Road, Humewood. Tel: +27 (0) 41 586 0000 E-mail: oceanside.surfstore@vodamail.co.za

SHOP BIGGER, SHOP BAYWEST.



BAYWEST
THE PULSE OF THE BAY



BAYWEST MALL, 100 BAYWEST BOULEVARD,
BAYWEST CITY, PORT ELIZABETH

GPS: 33.9518° S, 25.4601° E

21 Café Culture & Coffee



Among global consumers, coffee consumption is moving beyond being just a daily habit to becoming part of a lifestyle. For some, their morning ritual will not be complete without a cup of coffee, either at home, on-the-go or during a social get-together at a café.

Coffee appears to be the second-most consumed beverage in the world, after water. It is, however, significantly more than just a beverage. Considering the growing global demand for coffee, new trends are being observed in the South African coffee market. We have become obsessed with the social side of coffee. From those who stand in line every morning at seven a.m. waiting for their cup to grab-and-go, to the visitor who sits leisurely at a window-seat reading a newspaper or watching the world go by, and those meeting up with friends at a coffee shop they; all fall within this new trend. Then, there are also the solitary coffee drinkers, alone with their thoughts, and alone with their cups of coffee. Coffee is about savouring the moment.

Listed below are some firm favourite meeting places that fall within the coffee shop sector and serve great coffee as well as a tantalizing menu:

- Bocadillos, 42 6th Avenue, Walmer, tel: +27 (0) 41 581 1523
- Bocadillos, 1st Avenue, Walmer, tel: +27 (0) 41 581 8081
- Cobblestone Bakery, 6th Ave., Walmer, tel: +27 (0) 41 581 0182
- COFFEE Society, Gardens Shopping Centre, Circular Dr, Lorraine, tel: +27 (0) 41 367 1474
- Como Caffé, 86 Heugh Rd, Walmer, tel: +27 (0) 41 581 2798
- Company Social Brasserie, 49 Beach Rd., Humewood, tel: +27 (0) 41 582 2148
- Friendly Stranger, Bridge Street, tel: +27 (0) 76 437 6850
- Kaffeine Espresso Bar, Shop 8, Summerstrand Village, 8th Ave, Summerstrand tel: +27 (0) 41 583 5080
- Mastertons (Purveyors of Fine Coffee), 114 Russell Rd. & 69 Parliament Str., Central, tel: +27 (0) 41 585 4044
- Mugg & Bean, Walmer Park Shopping Centre, tel: +27 (0) 41 367 1099
- Mugg & Bean, Greenacres, tel: +27 (0) 41 363 0912
- Mugg & Bean, Baywest, tel: +27 (0) 41 492 0361
- Munros Coffee Shop, cnr. 17th Ave. & Buffelsfontein, tel: +27 (0) 71 890 8147
- Nouvo, 134 Villiers Rd., Walmer, tel: +27 (0) 581 4425
- Seattle Coffee Co., 125 Main Rd, Walmer, Tel: +27 (0) 41 581 0538
- South Boulevard Café, Walmer Boulevard & 2 Humewood Road, tel: +27 (0) 41 582 1559
- Stir Coffee Co., cnr. Heugh Rd. & 2nd Ave., Walmer, tel: +27 (0) 41 581 8633
- Urban Espress Coffee Co., 25 6th Ave, Walmer, tel: +27 (0) 41 581 3390
- Urban Espress Coffee Co., 12 Rochelle Rd, Perridgevale, +27 (0) 82 320 2560
- VovoTelo, Cnr Raleigh & Irvine Streets, Richmond Hill, tel: +27 (0) 41 585 5606



• COFFEE & TEA SPECIALISTS • 1114 1924

TRADITIONALLY HAND ROASTED SINCE 1924

Since first opening our doors in 1924, we have been building relationships with our customers and coffee lovers across South Africa by providing a unique personalised service. It's through these relationships and our continued commitment to excellence in coffee that has seen our coffee roastery go from strength to strength.

Mastertons Coffee is distributed nationwide, and is found everywhere from supermarkets, hotels, restaurants and coffee shops to the homes of coffee loving individuals across South Africa. Our ability to craft custom coffee blends to your taste and requirements is just one of the things that sets us apart. Our approach to coffee is defined by our motto "Constantly in Pursuit of Excellence", as we strive to provide only top quality Arabica coffee, premium teas, brew equipment and accessories, the highest level of advice and service to our customers throughout South Africa.

VISIT US

Coffee Roastery:

114 Russell Road, Central, Port Elizabeth,
6001

Coffee Equipment Store:

69 Parliament Street, Central, Port Elizabeth,
6001

Tel: +27 41 585 4044

Fax: +27 41 585 7651

Email: info@mastertons.co.za



m.mastertonscoffee
www.mastertonscoffee.co.za



22 Family Fun

Kids can experience loads of sea, sand, fun and sun in Nelson Mandela Bay which is why parents enjoy spending family time at this popular and laid-back leisure destination as well. This is a destination for children as well as their parents and family as there are a wide variety of fun activities and entertainment options to experience.

The Port Elizabeth Model Locomotive Society (PEMLS): Offers delightful miniature train excursions, complete with station overhead pedestrian bridge and tunnel. Tel: +27 (0) 41 365 6678 / +27 (0) 82 710 4503 (Joy & Brian Simpson). Open on the first Sunday of each month, from 10h00 till 13h00 and 16th Dec. R8 per ride. Located Cnr. Stella Londt Drive & May Way, Sunridge Park.

BAYWORLD, located at 23 Beach Road, Humewood, comprises a natural and cultural history Museum combined with an Oceanarium and Snake Park. Entrance fee: R45.00 Adults, R35.00 Children 3 – 17 years, R40 for Pensioners. Free with NMB Pass. Tel: +27 (0) 41 584 0650. Open Mon. to Friday 09h00 to 16h30. Closed on weekends & Christmas Day www.bayworld.co.za

Cinema Venues:

Cinema lovers have some fine air-conditioned cinema venues from which to choose in Nelson Mandela Bay. These include the following:

- Ster-Kinekor Theatres @ The Bridge & BayWest (the only IMAX Theatre & Cine Prestige in the Eastern Cape) Ticket line: 0861 668 437 www.sterkinckor.com
- Nu Metro Cinemas @ Walmer Park & Boardwalk: 0861-CINEMA / +27 (0) 86 124 6362 / e-mail: helpdesk@numetro.co.za / www.numetro.co.za
- Walmer Park Nu Metro Cinema, 54 Walmer Park Shopping Centre, Main Rd & 16th Ave., tel: +27 (0) 41 367 1102
- Boardwalk Nu Metro Cinema, tel: +26 (0) 41 583 2000

Ten-Pin Bowling:

Lighthouses PE, located at 2nd Ave, Summerstrand, Boardwalk Complex, is open 7 days a week / 365 day a year and is one of the bigger entertainment centres under one roof. It includes ten-pin bowling with automatic scoring, 14 pool tables and a well-stocked cash bar with multiple big screens for sports viewing and socializing. Open Monday to Sunday, 09h00 to 24h00, tel: +27 (0) 41 583 1100 Website: lighthousespe.com



We provide a safe & exciting climbing space for children & those just getting into climbing, to the hardcore climbing enthusiast looking to push their limits.

WHAT WE OFFER

- LEAD CLIMBING THE ARCH
- BOULDERING CAVE
- TOP-ROPE CLIMBING
- CHILDREN CLIMBING
- FRIENDLY, HELPFUL STAFF
- SHOP

| | |
|--|------|
| Day Pass | R60 |
| Online Rope Course | R150 |
| Full Monthly Member | R520 |
| Student / Valley Family Monthly Member | R270 |
| Schooler Monthly Membership | R200 |
| Family Membership | R500 |
| SA Climbing Package | R500 |
| Gear Rental Rates | |

Mon: 10am - 5pm Tues - Fri: 9am - 5pm
Sat: 9am - 5pm Sun: 9am - 5pm
Public holidays: 9am - 5pm (Closed Christmas & New Years Day)

RATES, GEAR & TIMES

16 Lower Valley Road, Bakkers Valley, Port Elizabeth, 6001
082 576 4622 valleycrag@gmail.com www.valleycrag.co.za

GRAVITY

INDOOR TRAMPOLINE PARK

OPEN AREA - SLAY WURLE - BOUNCE HALL - SLIPPERY WALL - FRAM PIT

STAYING TRAMPOLINE - BOUNCE PIT & PLAY AREA

AGES 1 - 12 / 13+ / 14+ / 15+ / 16+ / 17+ / 18+ / 19+ / 20+ / 21+ / 22+ / 23+ / 24+ / 25+ / 26+ / 27+ / 28+ / 29+ / 30+ / 31+ / 32+ / 33+ / 34+ / 35+ / 36+ / 37+ / 38+ / 39+ / 40+ / 41+ / 42+ / 43+ / 44+ / 45+ / 46+ / 47+ / 48+ / 49+ / 50+ / 51+ / 52+ / 53+ / 54+ / 55+ / 56+ / 57+ / 58+ / 59+ / 60+ / 61+ / 62+ / 63+ / 64+ / 65+ / 66+ / 67+ / 68+ / 69+ / 70+ / 71+ / 72+ / 73+ / 74+ / 75+ / 76+ / 77+ / 78+ / 79+ / 80+ / 81+ / 82+ / 83+ / 84+ / 85+ / 86+ / 87+ / 88+ / 89+ / 90+ / 91+ / 92+ / 93+ / 94+ / 95+ / 96+ / 97+ / 98+ / 99+ / 100+

PRICES PER PERSON

AGES 1 - 12 / 13+ / 14+ / 15+ / 16+ / 17+ / 18+ / 19+ / 20+ / 21+ / 22+ / 23+ / 24+ / 25+ / 26+ / 27+ / 28+ / 29+ / 30+ / 31+ / 32+ / 33+ / 34+ / 35+ / 36+ / 37+ / 38+ / 39+ / 40+ / 41+ / 42+ / 43+ / 44+ / 45+ / 46+ / 47+ / 48+ / 49+ / 50+ / 51+ / 52+ / 53+ / 54+ / 55+ / 56+ / 57+ / 58+ / 59+ / 60+ / 61+ / 62+ / 63+ / 64+ / 65+ / 66+ / 67+ / 68+ / 69+ / 70+ / 71+ / 72+ / 73+ / 74+ / 75+ / 76+ / 77+ / 78+ / 79+ / 80+ / 81+ / 82+ / 83+ / 84+ / 85+ / 86+ / 87+ / 88+ / 89+ / 90+ / 91+ / 92+ / 93+ / 94+ / 95+ / 96+ / 97+ / 98+ / 99+ / 100+

WE ARE OPEN ON SUNDAYS AND ALL PUBLIC HOLIDAYS

6 Roshan Road, Framesby
Opp. Market, turn off at Sike's Quik, head to Koppie
Winkels & Wilton's Bakery

WE DO CORPORATE TEAM BUILDING,
BODYSOFT LEAGUES,
FITNESS CLASSES & BIRTHDAY PACKAGES

041 360 3863 bookings@gravitype.co.za www.gravitype.co.za
www.e1ive.co.za

Happy Valley: Ideal for family strolls in pleasant surroundings and offers a delightful fairy-tail and nursery rhyme setting of coloured lights in the summer evenings. There are lily ponds, rockeries, gigantic palms and peaceful retreats in which to sit. Beach Manager's Office, tel: +27 (0) 41 506 1423.

The Magic Company Amusement Park located at the Boardwalk, offers kiddies entertainment such as outdoor Go-Kart racetrack, a Putt-Putt Mini-Golf Adventure Course - 9 holes, fairground rides, bumper boats and modern video and games arcade. Open from Monday to Sunday 10h00 – 22h30, Tel: +27 (0) 41 583 1470 / 507 7777

Fun Factory @ Baywest Mall: Entrance 4 Lower Ground - shoppers are spoilt for choice with something on offer for absolutely everyone. From the Eastern Cape's only ice rink, to the Star-Kinekor wing boasting both an IMAX theatre, and the luxury movie experience, Cine prestige. The Mall also boasts a high-tech games arcade, a bowling alley, and a range of mouth-watering eateries to choose from between all the fun and games!

- **Movies:** A VIP lounge, luxury reclining seats with Gourmet Menu and the biggest screen in the Eastern Cape, Tel: +27 (0) 76 239 8220 / +27 (0) 87 820 8211
- **Nitro Park:** Games arcade, freshly imported from the USA for hours of endless entertainment for both young and old, Tel: +27 (0) 41 492 0342
- **Baywest Ice Rink:** North American-sized ice rink which caters for novice and expert skaters. Open 7 days a week, school holidays: Mon. To Sun. 10h00 – 17h00 & 19h30 – 22h00; Government Term Time: Mon. to Sun. (but closed on Mon. evenings); open on all public holidays except Christmas Day. Tel: +27 (0) 41 492 0318 E-mail: baywest@theicerink.co.za

Nelson Mandela Bay Science & Technology Centre: Housed in the restored old railway workshops at Drostdy Street, Uitenhage, this 4,000 m² facility incorporates nearly 100 interactive exhibits which allow one to experience science, mathematics and technology in a fun and stimulating way. Entrance fee charged. Open Mon. to Fri. 09h00 to 16h00. Tel: +27 (0) 41 991 5000 / +27 (0) 87 353 1734. Closed on weekends & public holidays. Group bookings essential. Casual visitors welcome without booking. NMBT's Uitenhage Visitor Information Desk is located inside the Centre.

Open Sky Entertainment Park is situated on a beautiful farm in Wyndomayne Rd., Little Chelsea and boasts a challenging eighteen-hole putt-putt course, lovely bush paintball area, animal touch farm, indigenous plants and trees as well as a cozy coffee shop / tea garden. Also offers pony rides, jungle gym, trampoline and kid's carousel, tel: +27 (0) 41 372 1235 / +27 (0) 76 531 2888 Open Tue. to Sun. 09h00 to 17h00.

Paintball Heaven, located at 48 Victoria Drive, Walmer offers action-packed games traversing across six fields. Options include big bush field, small bush field, urban field, concrete speedball field, air ball speedball field and tower castle – also has refreshments and braai facilities. Tel: +27 (0) 41 366 2134 (daytime) / +27 (0) 41 379 2443 (after hours) / +27 (0) 82 798 4870. Mon. to Sun. open from 09h00 to 17h00 (bookings essential). www.paintballheaven.co.za

VW AutoPavilion – Place of Cars and Legends: The AutoPavilion, located at 103 Algoa Road, Uitenhage, proudly showcases the evolution of the Volkswagen Group South Africa. The displays capture Volkswagen's legacy with state-of-the-art technology. From cars that chronicle the past to an exciting look at the future; enjoy an epic expedition through the Place of Cars and Legends. Open weekdays 08h30 to 16h00, first Sat. of each month 10h00 to 13h00 (closed on public holidays). Entrance fee: Tours cost R10 per adult, R5 for children under 16, R5 for pensioners and includes a free tour of the Autopavilion. Mon. – Thurs. 09h00 OR 12h00, Fri. 09h00 (no weekend tours). Tel: +27 (0) 41 994 5941/3 www.autopavilion.co.za. All factory tours on hold until February 2018.



Animals in Wonderland

Educational Wildlife Sanctuary

SCHOOL OUTINGS - EDUCATIONAL ANIMAL TALKS AT SCHOOLS
EXCITING REPTILE SHOWS at: Birthday Parties and
Private Functions



DAY VISITORS, TOUR GUIDES AND GROUPS

Menu with light lunches and soft drinks or bring your own
snacks, drinks or picnic baskets. Bookings essential. Cash only.

Jeru Greenfingers 074 824 3962

jeru@animalsinwonderland.co.za • Follow us on Facebook

www.animalsinwonderland.co.za

Call 041 5840650

www.bayworld.co.za
email pr@bayworld.co.za



the German Club Welcomes all ...



We would like to welcome you to the German Club of Port Elizabeth, located at 5 Lorraine Street, Lorraine. Take a couple of hours to enjoy the variety of activities that our club offers to retain the culture and the inheritance of Germany.

Please feel free to relax and enjoy the facilities. Our popular restaurant and cosy pubs will set the mood and our waitron / bar ladies will serve you.
Dress: Smart Casual

Ample secure parking is available within our premises.
Come and enjoy German cuisine, hospitality & beer, discover "Gemütlichkeit" at its very best!

Our facilities include:

- The "Bauernstube" our authentic German restaurant with excellent typical German cuisine, various function rooms for your special occasion be it a conference, Birthday party, a Wedding or any other celebration.
- An intimate Beer garden with a Lapa and our Skittle alley - a typical German bowling alley perfect for team building or social functions.

Tel: +27 (0) 41 367 2791 Website: www.germanclub.co.za/deutsch

BRIDGE STREET MASTER BS+B BREWED BREWERY

- 100% NATURAL CRAFT BEER
- GREAT TIMES, GREAT FOOD
- TRENDY LOCATION ON THE BAAKENS RIVER
- ONSITE MICROBREWERY
- BEER TASTING & TOURS

Place of honest craft beer

No. 1 Bridge Street, Brickmakers Kloof | 041 581 0361 | bridgestreet.co.za
FB: [bridgestreetbrewerype](https://www.facebook.com/bridgestreetbrewerype) | Instagram: [bridgestbrewery_pe](https://www.instagram.com/bridgestbrewery_pe)

Horse Riding: Nelson Mandela Bay offers horse riding experiences on the outskirts of the city, ranging from open grazing land, through fynbos to coastal terrain. Riding lessons as well as beach out-rides and cross-country trails for beginners and experts are promoted. Bookings are essential at least two days prior and rides are weather dependent. Open 7 days a week, from 09h00 to 17h00. Plot 431, Sardinia Bay Rd, Lovemore Park. Contact Heavenly Stables Cell: +27 (0) 81 890 7080 www.heavenlystables.co.za

The Valley Market: On the first Saturday of every month in the Baakens Valley, head to the Valley Market! Artisan Food Fair supplied by local exhibitors & made available to the PE community with the utmost quality & creativity in mind. Cnr. Lower Valley Road & Union Street, Baakens Valley. Will move to Donkin Village, opp. Roof Garden Bar for Summer period. Open from 9am to 2pm. Entrance is R10 p/p, kids under 12 enter for free. Cell: +27 (0) 79 444 5666 www.facebook.com/thevalleymarketpe

Pine Lodge Family Outdoor Activities: For fun in the sun at Pine Lodge, experience ziplines & high ropes, donkey cart rides through the Cape Recife Reserve, guided Nature Walks, Lighthouse Tours, Putt Putt and FatBike Beach Tours. Tel: +27 (0) 41 583 4004 / E-mail: adventures@pinelodge.co.za

Art in the Park: An open-air exhibition of crafts operating on the last Sunday of each month at St. George's Park, Park Drive including plants, second-hand books, bric-a-brac, ornaments, household items and stalls with collectible items. Fresh hot and cold fast-foods, soft drinks, dried fruits, nuts, honey, home-made bottled preserves, are also on offer. Art-In-The-Park also operates on the 1st, 2nd and 3rd Sundays in December. Stalls open from 08h00 to 14h00. School bands, and other musical entertainment, is arranged periodically, as well as displays from EP Dog Association and the Animal Welfare Association. Contact: Ms Mareen Olivier. Tel: +27 (0) 41 581 2234 / Cell: +27 (0) 72 245 4926

Family Picnics:

- The Island Nature Reserve located along Seaview Road offers numerous walks, as well as picnic sites and a braai area. Open Mon. to Thur. between 08h00 to 16h30, Fri. to Sun. & Public Holidays 08h00 to 16h00. Entrance fee R55 adults, R25 children under 12. Tel: +27 (0) 41 378 1634 / +27 (0) 78 473 0444 / +27 (0) 87 287 9294 / +27 (0) 79 496 7923.
- Gourmet Picnics for Day Visitors in a safe & secluded part of Maitland Valley @ Thunzi Bush Lodge – ideal for family treats. Choose from a scrumptious picnic menu. Picnics offered Tues. – Sun. from 12h00. Cell: +27 (0) 72 597 4810 OR +27 (0) 60 577 3327 www.thunzibushlodge.co.za

Other Family Amusement Centres:

- African Sky's, 120 Nassau Rd., Theescombe. Thatch-roofed family restaurant with enclosed kiddies play area which includes a mini-animal touch farm, jumping castles, trampoline and pony rides. Open Wed. to Sun, 10h00 – 16h00 Tel: +27 (0) 41 379 5002 / (0) 71 125 0878
- Kidz Play Park at Windsor, 43 Circular Drive, Charlo. Party Venue, Tea Garden and Play Park. Open Mon. to Sat. 09h00 – 16h00 (closed Wed.) Sun. 09h00 – 13h00. Tel: +27 (0) 41 367 1422 / (0) 72 227 0198 www.facebook.com/kidzplaypark
- Kiddie Lovers at Garden Lovers Garden Centre, located of Kragga Kamma Rd., Theescombe. Playground and putt-putt course for children of all ages. Open Tue. – Sat. 09h00 to 16h00, Sun. 09h00 to 14h00. Tel: +27 (0) 83 661 719

HERSPACE

HERSPACE wellness treatments for individuals, weddings and corporates. We're at The Sun International Boardwalk, +27418181764 and Port Elizabeth Airport, +27418181765. We offer spa and salon services to traveling executives, tourists and Port Elizabeth locals. We provide wellness services such as facials, waxing, body massages, manicures, pedicures and hair treatments. Hair services such as wash and blow dry's, colour and styling are only available at the Boardwalk store. Website: www.herspaces.com. Email: info@herspaces.com

Sun Boardwalk

Situated on the Port Elizabeth beach-front, with the entrance overlooking the world famous Hobie Beach, The Boardwalk is the favourite place to play, stay meet and connect in the Eastern Cape. Clustered around The Boardwalk Casino is a world of restaurants, bars, fast food outlets, cinemas, crafters and specialty shops.

Contact details: 041 507 7777 - www.boardwalk.co.za



THE BOARDWALK CASINO

* 948 REASONS TO COME VISIT!

920 slot machines

28 table games

- Black Jack
- Roulette
- Baccarat
- Poker
- Area Dice

THE BOARDWALK SUPPORTS RESPONSIBLE GAMING. GAMBLING FOR PERSONS 18 YEARS AND OLDER. WINNERS KNOW WHEN TO STOP. NATIONAL RESPONSIBLE GAMING TOLL-FREE COUNSELLING LINE 0800 838 888. SUN INTERNATIONAL CASINOS ARE LICENSED CASINOS.

23 Fine Food

Nelson Mandela Bay offers visitors an excellent selection of restaurants, pubs and cocktail bars from the historical city centre to the outlying suburbs offer a wide range of cuisine to satisfy any palate! Key: ★ Halaal Foods / ♿ Wheelchair Friendly

Grill/Steakhouses

- Asada, 26 Stanley Str., tel: +27 (0) 41 582 1981
- Barn & Barrel, Kings Court, tel: +27 (0) 41 368 9789
- Flava Restaurant, 17a Bain Street, Richmond Hill, tel: +27 (0) 41 811 3528
- Mike's Kitchen, 16 Buffelsfontein Road, Mount Pleasant, tel: +27 (0) 41 368 1247
- Mike's Kitchen, Summerstrand, tel: +27 (0) 41 582 3117
- Red Rock Spur, Boardwalk, tel: +27 (0) 41 583 6272
- RocoMamas, Shop 6, Dolphins Leap, tel: +27 (0) 41 582 2473
- Something Good Roadhouse, tel: +27 (0) 41 583 6986
- The Brewmaster, Newton Park, tel: +27 (0) 41 364 1997
- The Coachman, Brookes on the Bay, Humewood, tel: +27 (0) 41 584 0087
- The Steakout Restaurant, cnr. 2nd Ave. & Newton Str, Newton Park, tel: +27 (0) 41 363 0499 ★
- The Hussar Grill, 50 Sixth Ave., Walmer, tel: +27 (0) 41 581 1734
- The Kings Landing, Walmer, tel: +27 (0) 62 826 6037

In-House Restaurants and buffet Restaurants

- Arkenstone Restaurant and Guesthouse, tel: +27 (0) 41 373 7093
- Blackbeards, The Chapman Hotel, tel: +27 (0) 41 584 0623
- De Kelder Restaurant, Protea Hotel Marine, Summerstrand, tel: +27 (0) 41 583 2750
- Farragers, The Kelway Hotel, tel: +27 (0) 41 584 0638
- Ginger, The Beach Hotel, tel: +27 (0) 41 583 1229
- Kiplings Brasserie, Boardwalk Hotel, tel: +27 (0) 41 507 9452
- La Mer Restaurant, Protea Hotel Marine, tel: +27 (0) 41 583 2101
- Leo's Bistro & Lounge, Ibhayi Town Lodge, No. 24 9th Ave, Walmer, tel: +27 (0) 41 581 6561
- Satis Restaurant, Summerstrand Hotel, tel: +27 (0) 41 583 3131
- Tabú Grill, Radisson Blu, Summerstrand, tel: +27 (0) 41 509 5000
- The Bayside Pantry, The Boardwalk, tel: +27 (0) 41 507 7793
- The Crest Restaurant, The Beach Hotel, tel: +27 (0) 41 583 2161
- The Island Grill and Bar, Pine Lodge Resort, tel: +27 (0) 41 583 3789
- The Restaurant @ Hacklewood Hill, tel: +27 (0) 41 581 1300
- The Sandpiper, The Humewood Hotel, tel: +27 (0) 41 585 8961
- The Stage Door, Phoenix Hotel, 5 Chapel Street, Central, tel: +27 (0) 41 586 3553
- The Verandah, The Beach Hotel, tel: +27 (0) 41 583 2161

Oriental Restaurants

- Asian - Suki Sushi & Asian Cuisine, 55 Prospect Road, Walmer, tel: (0) 41 581 1111
- Cantonese - Golden Coast Restaurant, 77 Heugh Road, tel: +27 (0) 41 581 8025
- Chinese - Kwai Lok, 296 Cape Road, Newton Park, tel: +27 (0) 41 363 8092
- Indian - Raasole Restaurant, 9 Dolphins Leap, Beach Road, tel: +27 (0) 41 582 3981
- Indian - Royal Delhi, Cnr Burgess & Zareba Streets, Richmond Hill, tel: +27 (0) 41 373 8216
- Japanese - Yi Pin, The Boardwalk, Humewood, tel: +27 (0) 41 583 6688 / 98
- Thai - Natti's Thai Kitchen, 5 Park Lane, Mill Park, tel: +27 (0) 41 373 2763
- Thai - Royal Siam, 90 Main Road Walmer, tel: +27 (0) 41 581 1862
- Thai - Simply Asia, Moffet On Main Shopping Centre, tel: +27 (0) 41 368 5689

Ginger Restaurant

Experience a fusion of urban chic and contemporary cuisine at Port Elizabeth's award-winning Ginger Restaurant. An ideal location, awesome ocean views, and a menu which thrills the palate, combined to create a fresh take on fine dining. Open daily for lunch and dinner. Contact us on +27 (0) 41 583 1229 or e-mail: info@ginger-restaurant.co.za Website www.ginger-restaurant.co.za




Luxurious, unique place like no other!

*Our passion is in our food!
The only Sushi bar in Addis*



www.africanos.co.za
T: 042 233 0030/32 - info@africanos.co.za



Port Elizabeth's award-winning



Tel: 041 583 1229
Email: info@ginger-restaurant.co.za
Web: www.ginger-restaurant.co.za



24 Entertainment Venues

Seafood Restaurants

- Barnacles, cnr Craddock & Elizabeth Roads, Seaview, tel: +27 (0) 41 378 2058
- Blue Waters Café, Shark Rock Pier, Marine Drive, tel: +27 (0) 41 583 4110
- Chart Room Restaurant, Algoa Bay Yacht Club, tel: +27 (0) 41 585 2893
- Fushin, Richmond Hill, tel: +27 (0) 41 811 7874
- John Dory's, Summerstrand, tel: +27 (0) 41 584 0067
- John Dory's, Walmer Park, tel: +27 (0) 41 367 1880
- John Dory's Baywest, tel: +27 (0) 87 285 8507
- Oceans 11, 42 6th Avenue, Walmer, tel: +27 (0) 41 581 3345
- Ocean Basket, Brookes on the Bay, Humewood, tel: +27 (0) 41 584 0059
- Ocean Basket, Fig Tree Park, Walmer, tel: +27 (0) 41 368 5525
- The Chartroom, Algoa Bay Yacht Club, PE Harbour, tel: +27 (0) 41 585 2893
- This is Eat, PE Harbour, tel: +27 (0) 41 582 2161

Continental Restaurants

- Austrian – Old Austria, 24 Westbourne Road, Richmond Hill, tel: +27 (0) 41 373 0299
- Cosmopolitan – Muse Restaurant, 1B Stanley Street, Richmond Hill, tel: +27 (0) 41 582 1937
- Cosmopolitan – Divino Restaurant, 26A Raleigh Street, Richmond Hill, tel: +27 (0) 41 582 1887
- Cosmopolitan – Primi Piatti, Brookes on the Bay, Humewood, tel: +27 (0) 41 584 0277
- Greek – Zorba's, Richmond Hill, tel: +27 (0) 41 582 1193
- German – German Club, 5 Lorraine Street, Lorraine, tel: +27 (0) 41 367 2791
- Italian – Col'Cacchio Pizzeria, The Boardwalk, Humewood, tel: +27 (0) 41 583 1302
- Italian – Bonamia Restaurant, Walker Drive Shopping Centre, tel: +27 (0) 41 360 0635
- Italian – Panarottis, Baywest Mall, Walker Drive, tel: +27 (0) 41 492 0343
- Italian – Remo's Italian, Albaster Road, Baakens, tel: +27 (0) 82 877 6411
- Italian – St Elmo's Woodfired Pizzeria, Walmer Park, tel: +27 (0) 41 368 3536
- Latino – Cubana Lounge & Cafe, Humewood, tel: +27 (0) 41 582 5282
- Mediterranean – Two Olives, 1a Stanley Street, Richmond Hill, tel: +27 (0) 41 585 0371
- Mediterranean – Yaiyas, 20 Stanley Street, Richmond Hill, tel: +27 (0) 41 582 2848
- Mexican – Chingada's, 54 Main Rd., Walmer, tel: +27 (0) 41 581 0098
- Mexican – Taco Mia, 129 Fordyce Rd., Walmer, tel: +27 (0) 62 449 0109
- Portuguese – Cubata Restaurant, 16b Arthur Street, Sydenham, tel: +27 (0) 83 754 2768
- Portuguese – Shanna's, Lorraine, tel: +27 (0) 41 367 4560
- Greek – La Kouzina Brooks on the Bay Humewood, tel: +27 (0) 41 584 0167

Bistro / Bakery / Coffee Shops / Tea Gardens / Country Restaurants

- Angelos, Walmer, tel: +27 (0) 41 581 0776
- Apron Strings, Sardinia Bay Road, Lovemore Park, tel: +27 (0) 41 366 1217
- Bocadillos, 42 6th Avenue, Walmer, tel: +27 (0) 41 581 1523
- Bocadillos, 1th Avenue, Walmer, tel: +27 (0) 41 581 8081
- Boardwalk Hotel Lobby Lounge, tel: +27 (0) 41 507 9452 / 507 7777
- Brioche, 181 Main Road, Walmer, tel: 041 581 2136
- Cobblestone Bakery, 6th Ave., Walmer, tel: +27 (0) 41 581 0182
- Falcon Rock Country Restaurant, Van Stadens Gorge Road, tel: (0) 41 956 0151
- Finnezz Fusion Cafe, Humeral, tel: +27 (0) 41 586 3233
- Frederick & Son, Albaster Street, South End, +27 (0) 82 703 0020
- Friendly Stranger, Bridge Street, tel: +27 (0) 76 437 6850
- Grass Roof Restaurant & Bakery, cnr. New Seaview & Heron Rd., tel: +27 (0) 41 366 2379
- Life with Lemons, 278 Main Road, Port Elizabeth tel: +27 (0) 41 581 581 4298
- Rhubard & Lime, 7 Park Lane, +27 (0) 41 373 3186
- Roastmasters, Walmer, tel: +27 (0) 41 367 1236
- Sacramento Restaurant, 32 Marine Drive, Schoenmakerskop, tel: +27 (0) 41 366 2312
- Savages Fine Food, 70 Park Drive, tel: +27 (0) 41 373 1473
- South Boulevard Café, Walmer Boulevard & 2 Humewood Road, tel: +27 (0) 41 582 1559
- The Garden Café, 16 Walker Drive, Sherwood Garden Centre, tel: +27 (0) 41 398 4400
- The Joneses, Bloomingdales, 145 Main Rd. Walmer, tel: +27 (0) 82 909 4956
- The Rose Garden Tea House @ Floradale Nurseries, 63 Circular Drive, tel: +27 (0) 41 368 1295
- Treehouse, Bushbuckridge, Colleen Glen, Cel: +27 (0) 83 244 9191
- Urban Express Coffee Co., No. 25 6th Ave., Walmer, tel: +27 (0) 41 581 3390
- VovoTelo, Cnr Raleigh & Irvine Streets, Richmond Hill, tel: +27 (0) 41 585 5606

Authentic African Cuisine

- Blawa Butchery, Mendi Road, New Brighton, +27 (0) 78 608 6691
- Black Impala (Tshisanyama), 153 Grahamstown Rd., Deal Party, cell: +27 (0) 73 206 2822
- Food Etc., Boardwalk, +27 (0) 82 652 9900
- Shisa African Restaurant, Baakens Str., Port Elizabeth Harbour, tel: +27 (0) 79 842 2635

Regular concerts, musicals and productions by various artists and theatre groups are staged at major venues. Alternative performances are staged at some of the smaller and more intimate secondary venues. Bookings may be made via the Computicket Call Centre, tel: 0861 915 8000, www.computicket.com

The Savoy Club Theatre located cnr. Stirk & Collett Str., Adcockvale, is home to the Gilbert & Sullivan Society and is the perfect entertainment venue for smaller productions such as modern musicals, operettas and plays. For Stepping Out Fancy Dress & Costume Hire contact Rose Cowpar Cell: +27 (0) 072 906 1977 www.facebook.com/groups/188483150558/about/

Feather Market Centre is a stately multi-purpose venue located cnr. Baakens Str. & Military Rd. Named after the building's former use as a market for ostrich feathers, the venue is used for concerts, exhibitions, conferences and more. The facilities consist of the main auditorium with a raised stage with cinema-style seating, the Baakens Room & Gilbey's Suite adjoining the auditorium for smaller functions, and the refurbished Selley Hall tel: +27 (0) 41 506 7431

The Eastern Cape Philharmonic Orchestra: Part time orchestra comprised of local professional and amateur musicians from various professional disciplines. Concert schedules are planned for the year and most ECO performances are held at the Feather Market Centre, tel: +27 (41) 581 7747. www.ecpo.org.za

The Athenaeum / Ford Little Theatre: Located cnr. Castle Hill Street & Belmont Terrace, the Athenaeum was founded in the 1850s to promote cultural and social activities. Port Elizabeth Musical and Dramatic Society rented and enlarged the Loubser Hall extension, now called the Ford Little Theatre. The restored venue has become a focal point of the Arts, Culture and Heritage, tel: +27 (0) 41 585 1041. E-mail: info@theAthenaeum.co.za Website: www.theAthenaeum.co.za www.facebook.com/Pemads-at-The-Little-Theatre-35967594070614/

The Opera House located on the cnr. Whites Rd. & Chapel Str., was established in 1892 and is the only surviving example of a Victorian theatre in Africa. The interior boasts an impressive stained glass works at the top of the stairwell leading to the upper level. There are three performance theatres: The Barn Theatre (a 100-seater that can be altered between cabaret and theatre seating); the Main Theatre, seats 600 and was built for ballet, opera and musicals; and the Art Hub at Chapel Street is a 100-seater, suitable for development programmes. Tel: +27 (0) 41 586 2256. E-mail: arts@peoh.co.za Website: www.peoh.co.za

The Tramways, cnr. Valley Rd. and South Union Street, Central, is an events & conference venue that caters to various types of functions. The spaces cater for bespoke conferences, exhibitions, Food Markets, Night Markets, Craft Shows, Music Events, Cocktails Events, Product/Service Launches and much more. For more information, contact tel: +27 (0) 41 811 8200 or e-mail: tramways@mmbda.co.za

Nangoza Jebe Hall (previously Centenary Hall) located in Ntshekisa Road, New Brighton is a multi-purpose venue which caters for numerous events. The venue can seat 2 090 and has three breakout rooms, tel: +27 (0) 41 454 3913

Boardwalk Vodacom Amphitheatre is the perfect venue for live musical entertainment, comedy and cabaret shows. Offers undercover protection from the elements. Tel: +27 (0) 41 507 7777 Website: www.boardwalk.co.za

Bay City Music Club: A communal forum for Eastern Cape musicians and music lovers to update and share information about upcoming gigs & events and music lovers to keep updated and post feedback. www.facebook.com/four.winds.music

The Roof Garden Bar is a function venue in 33 Chapel Str., Central Cell: +27 (0) 82 682 3571 E-mail: roofgarden@tlypiggy.co.za Website: roofgarden@33chapel.co.za

The Music Kitchen: PE's leading live venue, located at 69 Mangold Rd, Newton Park, where local and national artists perform in an intimate 120-seater with plenty of standing space, bonfire and pub & restaurant. Tel: +27 (0) 41 364 1964 / +27 (0) 72 994 5096 www.musickitchen.co.za www.facebook.com/TheMusicKitchen

Chicky's Yard, Baakens Valley is a popular performance & event venue – very trendy for food and beverage festivals such as Baakens Food Truck Friday www.facebook.com/chickysyard/ www.facebook.com/BaakensFoodTruckFriday

25 Nightlife



When the sun goes down in Nelson Mandela Bay, the fun continues! After dark, the city is transformed into a bejeweled sea of lights, and the nightlife sizzles, providing entertainment for every taste. Local bands and talented local artists entertain at various venues, including beachfront pubs, cocktail bars, nightclubs and late-night music spots.

The Boardwalk Casino and Entertainment World

The complex offers a selection of specialist shops, crafts, restaurants and entertainment venues set around a man-made lake with a Multimedia Musical Fountain which creates a unique leisure and entertainment experience. The Casino has electronic, smart card operated slot machines.
Tel: +27 (0) 41 507 7777 www.boardwalk.co.za

The Boardwalk Beachfront

Adjacent to the Boardwalk Casino Complex is the Boardwalk Beachfront Complex, its idyllic setting overlooks the famous Humewood beachfront and Shark Rock Pier. The following venues are found within the complex:

Rossands on the Beach Café (Fast Food & Ice Cream Parlour),
Tel: +27 (0) 41 583 1676

Kentucky Fried Chicken, Tel: +27 (0) 41 583 4400

Blue Waters Café, Tel: +27 (0) 41 583 4110

Barney's Tavern, Tel: +27 (0) 41 583 4500

Angelo's Beachfront, Tel: +27 (0) 41 583 5862

Pubs and Cocktail Bars

An entertaining variety of traditional English pubs, taverns and cocktail bar options are available in Nelson Mandela Bay, most of which also offer live music and partying for late night revelers and entertainment seekers. In the evenings, especially over weekends, places like Stanley Street become a hive of activity with patrons dining both inside and out (depending on the weather).

Algoa Bay Yatch Club Bar, PE Harbour, Tel: +27 (0) 41 585 4058

Barney's Lorraine, 203 Circular Drive, Tel: +27 (0) 41 368 1387

BeerYardPE, 1 Cooper Street, Richmond Hill, Tel: +27 (0) 41 582 2444

Bravo Bar, Boardwalk Complex, Summerstrand, Tel: +27 (0) 41 507 7902

Bridge Street Brewery, No. 1 Bridge Str., Brickmakers Kloof,
Tel: +27 (0) 41 581 0361

Charter Club Bar, Boardwalk Complex, Tel: +27 (0) 41 507 7793 / 7777

Dockside Ale House (official tap room of Dockside Brewery), The Boardwalk,
Tel: +27 (0) 83 273 7505 Karl

Finnezz Restaurant and Cocktail Café, Humeraill Shopping Centre,
Tel: +27 (0) 41 586 3233

Glendore Arms Pub and Grub, Glendore Rd., Tel: +27 (0) 41 366 1028

Lighthouse, Boardwalk Complex, Summerstrand, Tel: +27 (0) 41 583 1100

Music Kitchen, 69 Mangold Str., Newton Park, Tel: +27 (0) 41 364 1964

News Café, The Boardwalk, Tel: +27 (0) 41 583 6660

Pool City, Newton Str., Newton Park, Tel: +27 (0) 41 365 1354

Pool City, Time Square Shopping Centre, Heugh Rd., Walmer,
Tel: +27 (0) 41 581 0980

Quarter Deck Bar, Humewood Hotel, 33 Beach Road, Humewood,
Tel: +27 (0) 41 585 8961

Richmond Hill Brewing Co., 2 Alabaster Str., Baakens Valley,
Tel: +27 (0) 78 396 5485

Soho Fushin Lounge, Times Square Shopping Centre, Heugh Rd., Walmer,
Tel: +27 (0) 41 811 7874 / +27 (0) 82 865 2707

Soho Fushin Lounge, Stanley Str., Richmond Hill, Tel: +27 (0) 41 811 7874

Something Good Roadhouse, Marine Drive, Tel: +27 (0) 41 583 6986

Tabú Bar & Lounge, Radisson Blu Hotel, Tel: +27 (0) 41 509 5000

The Boodles Bar, Summerstrand Hotel, Marine Drive, Summerstrand,
Tel: +27 (0) 41 583 3131

The Brazen Head, 76 Cape Rd., Mill Park, Tel: +27 (0) 41 373 0936

The Bru Bar, 161 Heugh Road, Walmer, Tel: +27 (0) 41 581 5335

Tshawe Bar, Boardwalk Hotel, Tel: +27 (0) 41 507 7777

White Tiger Bar & Café, Dolphins Leap, Cell: +27 (0) 78 717 9491

Ziggy's Rock & Reggae, Pine Lodge Resort, Marine Drive, Summerstrand,
Tel: +27 (0) 41 583 3789

Wine Tasting:

Theescombe Estate Wines, located at 51A Venter Ave., offer guided tours through their small vineyard, thereafter, wine tasting can be enjoyed with a cheese platter. Bookings essential. Tel: +27 (0) 41 379 4035 / +27 (0) 73 889 6663 Website: www.theescombewines.wix.com/theescombewines

Life is Grape, located at 82 Main Rd., Walmer, sources wine from the smaller wine farms and introduces a new wine for tasting every month – wine tastings daily (except Monday's) served with cheese and meat platters (optional). Cell: +27 (0) 82 931 1253 E-mail: wine@lifeisgrape.co.za Website: www.lifeisgrape.co.za/

Craft Beer Industry:

Craft Breweries are on the rise and increasing in their popularity amongst beer connoisseurs. Listed below are some trending micro-breweries in Nelson Mandela Bay:

Bridge Street Brewery, No. 1 Bridge Str., Brickmakers Kloof,
Tel: +27 (0) 41 581 0361

Dockside Ale House (official tap room of Dockside Brewery),
The Boardwalk, +27 (0) 83 273 7505 Karl

Richmond Hill Brewing Co., 2 Alabaster Str., Baakens Valley, +27 (0) 78 396 5485

LATE NIGHT VENUES

BeerShack, 1 Dolphins Leap Centre, Tel: +27 (0) 41 582 2354

Dash Nightclub, 123 Parliament Street, Central, Tel: +27 (0) 41 581 6260

Gondwana Café, Dolphins Leap, La Roche Drive, Tel: +27 (0) 41 585 0990



26 TOP Experiences

TAKE TIME TO JOURNEY INTO THE HEART OF NELSON MANDELA BAY.

These top experiences offer the perfect combination of scenic beauty, enthralling history & exhilarating activities that define this beautiful corner of the Eastern Cape.

PURCHASE THE NELSON MANDELA BAY PASS



This smartcard access card is your ticket to adventure as it provides you with free admission to a wide variety of attractions & activities in Nelson Mandela Bay.

SAVOUR GOURMET PLEASURES



Try-out a few of the premier dining out districts such as Richmond Hill where many stylish restaurants serve tasty cuisine and where trendy coffee shops, deli's and speciality wine shops have flourished.

BEACH & COASTAL ENCOUNTERS



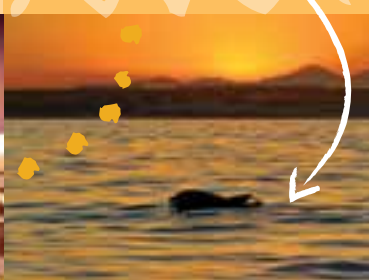
Port Elizabeth's pristine beaches are legendary, three of which boast full Blue Flag status. Wide expanses of golden sands and warm water are ideal for safe sheltered swimming, other water sport and beach leisure activities.

AUTHENTIC SOCIAL & CULTURAL TOWNSHIP TOURS



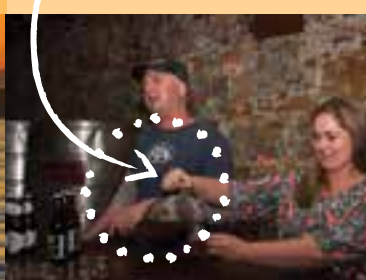
Broaden your intercultural understanding by joining an expert guide on a vibrant, authentic & interactive tour through local communities of Nelson Mandela Bay.

ECO MARINE SAFARIS IN ALGOA BAY



Opportunity to see 50% of the endangered African penguin population in their natural habitat, Cape Gannets, 4 different dolphin species with the largest Bottlenose Dolphin populations in the world, 4 whale species & various other marine species and birds on a boat charter.

MICRO-BREWERIES



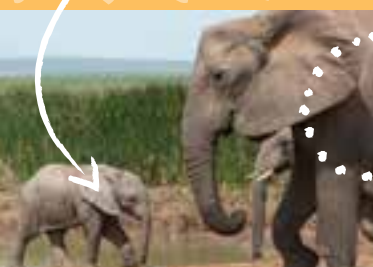
The Craft Beer Industry is increasing in popularity amongst beer connoisseurs. Experience a Micro-Brewery tour and visit some trending micro-breweries as each has their own carefully crafted recipes, natural ingredients and uniquely flavored profiles. The range of craft beers & artisanal ciders offers a variety of taste profiles.

HISTORICAL TREASURES



Explore historical nuggets of interest in the city centre which showcases some of the finest architectural attractions. As the landing place of the 1820 Settlers, the area offers a wealth of treasures.

ADDO ELEPHANT NATIONAL PARK



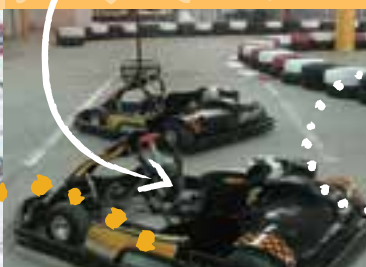
The only Park in the world to be home & habitat to the BIG 7: view the largest density of African Elephants on the planet, Cape buffalo, leopard, black rhino, lions & great white shark and seasonal southern right whale in the marine section.

ROUTE 67



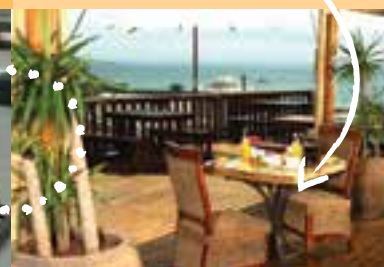
Uniting Arts, Culture & Heritage, the route portrays 67 Public Art Works symbolising Nelson Mandela's 67 years of work dedicated to the Freedom of South Africa & includes 67 steps leading up to the second largest flag in Africa.

FUN FAMILY ESCAPADES



Speciality activities include guided Segway beachfront tours, indoor climbing at Valley Crag Indoor Climbing Centre, recreational trampoline activities @ Gravity Indoor Trampoline Park, Indoor Go Carting at Algoa Grand Prix and VW Auto Pavilion automotive tour amongst others.

SCENIC EXCURSIONS



Venture out and explore picturesque coastal riches, hidden gems, exquisite lush countryside with country restaurants and quaint tea gardens. Enjoyable alternative options include a gourmet picnic or a wine and tasting at a small vineyard.

27 Tours & Travel

Add a unique travel experience to your itinerary. A wide variety of scenic day tours, trips and excursions are offered which encourage independent travellers to take time to explore. Qualified and accredited tour guides offer tailored tours to meet individual requirements. View the TOP EXPERIENCES pages in this guide for more ideas and options.

City, Social, Political and Historical Tours: One of the best ways to experience as much of Nelson Mandela Bay in the shortest time is to spend a morning or afternoon on a city tour. Superb and enlightening orientation and cultural tours are available. These incorporate many of the historical attractions, the modern developments in the city as well as the vibrant townships.

Excursions to Game Reserves: The Eastern Cape Region's rich and diverse wildlife may be experienced on comprehensive and exciting tours to the various private Game Reserves in the region.

Specialised Tours: Accredited Specialist Guides cater for general visitors, guests and groups with special interests. These guides can arrange helicopter flips, whale watching excursions, golf tours, as well as topics such as beer brewing, bird life, wildlife, shipwrecks off the coast, fossils, indigenous flora and conservation of our marine resources, etc.



Hop On Beer Route

The Hop On Beer Route in Nelson Mandela Bay takes you by coach to 3 micro breweries to taste 11 unique, crafted beers and a cider and ends with an evening meal.

PLEASE BOOK IN ADVANCE
www.hoponbeerroute.co.za
 Operated by Gecko Tours DAILY
 Tony - 082 464 8022 • Lungelo - 063 166 2997

FlyKaroo Air Services

Why drive when you can fly? FlyKaroo Air Services is a helicopter service in Graaff-Reinet that aim to optimise visitors' experience to the Karoo by giving them the best view of our most beautiful sites in the shortest amount of time. We not only specialise in scenic flights but also offer charter flights and picnic packages. Contact us at bookings@flykaroo.co.za or Cell: 064 751 6609. Go to www.flykaroo.co.za for online bookings.

Provincial Tour Guide Registrar

Eastern Cape Parks & Tourism Agency

Mr Mbulelo Siyo Tel: +27 41 492 1150 / Cell: +27 (0) 79 496 7900

E-mail: mbulelo.siyo@ecpta.co.za



ADVENTURE PROVINCE
Eastern Cape
 PARKS & TOURISM AGENCY



PEMBURY TOURS
 Covering Africa since 1996

Your Destination Management Company for Nelson Mandela Bay and the whole of South & Southern Africa

+27 (0)41 581 2581
info@pemburytours.com
www.pemburytours.com



CALABASH TOURS
 because we are different

- Explore Nelson Mandela Bay on our exciting cultural tours, exploring the historical heart of the city, as well as the vibrant townships.
- Tours Depart Daily.
- Addo Tours Daily

Bookings number: 041 585 61 62
Tours@calabashtours.co.za www.calabashtours.co.za

FAIR TRADE IN TOURISM
 SOUTH AFRICA



Umzantsi Afrika Tours
 Est. 2001

Established in 2001, Umzantsi Afrika Tours operates out of the beautiful coastal city of Port Elizabeth. We have a comprehensive list of 32 Day Tours in and around Port Elizabeth to choose from. Contact us for more information.

We specialize in tours through the Garden Route, covering wildlife, flora, cultural and adventure. We also run extended guided tours covering the whole of Southern Africa. Tailored self-drive packages are available as well as shuttle services to and from various airports, venues and game parks.

+27 82 822 4717 - +27 41 368 9008
tours@umzantsi.co.za - www.umzantsi.co.za

Afri-Cabs

With offices located at the cnr. Beach Rd. & Brookes Hill Drive, Humewood, we offer daily guided tours / transfers with fully registered certified guides and drivers. Tour options include a range of Adventure & Wildlife Tours, Beer/Wine Tasting and Waterfront Board Cruises as well as Historical, City, Township and Segway Beachfront Tours. Contact us via E-mail: info@africabstravelandtours.co.za Website: www.africabstravelandtours.co.za / Cell: +27 (0) 73 140 0603 Luvo / +27 (0) 76 426 0145 Sisa / +27 (0) 83 270 4968 Lester

East Cape Tours and Safaris

East Cape Tours and Safaris have an intricate knowledge of the Eastern Cape and South Africa as whole, and provide a fast, friendly and professional service. We consider ourselves the experts in Eastern Cape game reserves and safari lodges and offer free return transfers from Port Elizabeth to any nearby game reserve when booking 3 nights or more with us.

Tel: +27 (0) 41 581 6260 E-mail: reservations@eastcapetours.co.uk

Website: www.eastcapetours.com

Ezethu Tours

Ezethu Tours is a family owned and managed business based in Nelson Mandela Bay. We are passionate about sharing authentic Cultural Experiences, Wildlife and the great outdoors. We offer guided tours in the Eastern and Western Cape for groups and individuals. Tel: +27 (0) 41 818 4386 / Cell: +27 (0) 71 031 6136

E-mail: info@ezethutours.co.za

Route 67 Gecko Tour

Route 67: A celebration of Nelson Mandela's 67 years of public service – A guided walking tour of approx. 2 hours via historical sites, visual arts, urban design and heritage assets from the Campanile, via Vuysile Square, up the stairs to the Donkin, the pyramid, Lighthouse and flag on to Fort Frederik. Tours per arrangement. Gecko Tours, Cell: +27 (0) 82 464 6022

E-mail: tneveling@telkomsa.net

Lungton Tours

A registered tour agency, focussing on Route 67 Walking Tours, On-Site Tours of the recently renovated Campanile plus a shuttle service / transfers. Township Tours (historical, cultural and political trips to the oldest township in Port Elizabeth, mingling with locals) and City Tours (history of the 1820 British Settlers' arrival to current affairs). Contact Lungelo Ngabaza on Tel: +27 (0) 60 485 1771 / Cell: +27 (0) 63 166 2997 / E-mail: maillungelo@gmail.com / <https://www.facebook.com/Lungtontours/>

Pembury Tours

Pembury Tours has been arranging personalised itineraries for discerning guests throughout Southern Africa since 1996. Every itinerary that we produce for our clients is unique and tailor-made to suit their specific needs and budget. Because of our volumes, we get vastly reduced rates from hotels, lodges, car hire companies etc and we always pass on some of these reductions to our clients. Booking with Pembury will always cost less than booking directly. Enquiries: info@pemburytours.com Tel: +27 (0) 41 581 2581 www.pemburytours.com

Rhino Tours

Rhino Tours ZA offers day tours in the Eastern Cape, Garden Route Region and Addo Elephant Park. Rhino Tours is also based in Johannesburg, we offer day tours to Soweto, City Tours and Pilanesberg National Park. Rhino Tours provide long term tours and safaris in South Africa, Botswana, Namibia, Swaziland and Zimbabwe. Contact: Daryl Smith / Cell: +27 (0) 82 451 0869 / E-mail: info@rhinotours.net / Website: www.rhinotours.net

SA Guided Tours

Tour to Addo Elephant National Park (Daily); City Tour (09:30 & 12:00); Seaview Saunter (Daily); Kragga Kamma Game Park (Mon., Wed., & Sat.); Garden Route (3 days - Every Mon.) For the best value – try us. Contact: Peter Joseph OR Frank Smith OR Peter Giddy Tel: +27 (0) 41 373 3092 / Cell: +27 (0) 82 930 0768 Peter OR +27 (0) 83 291 9538 Frank OR +27 (0) 82 550 3174 Peter Email: peter@saguidedtours.com / frank@saguidedtours.com / peter.giddy@saguidedtours.com Website: www.saguidedtours.com

Shield Tours

Shield Tours offers day trips from Port Elizabeth to some must-see places and must-do activities in the Eastern Cape. Overnight tours as well as transfers in the Eastern Cape and beyond are also offered. Gourmet picnics on day trips and personalised service are the hallmarks of the Shield difference. Please call us on +27 (0) 84 508 0361 for packages and offers. Alternatively, email us at shield@shieldtours.co.za or visit www.shieldtours.co.za



BLUNDEN COACH AND SHUTTLE CHARTER

'Travel in Luxury. Arrive in Style' Blunden Coach and Shuttle Charter is a family owned business with over 45 years' experience in the transport industry. On offer we have;

LUXURY COACH TRANSFERS

Covering the metro or any part of the Republic, we will ensure that you arrive in style. With the luxury vehicles in our fleet being, 52, 19 and 7 seater Mercedes-Benz units.

LOCAL TOURING

Take in some of the local scenery that the Province and Metro has to offer, from 1 person to many people, we offer some touring activities for you.

- Daily Guided City Scenic and Historical Site Tours
- Daily Game Park Transfers
- Game Park Excursions
- Adventure Touring (bungee jumping, zip lining, sky diving etc.)

VARIOUS HOLIDAY PACKAGES AVAILABLE ON REQUEST

These packages include competitive rates on day visits to local Game Reserves, City Tours, shopping centre trips and airport transfers, tailor made to suit your budget.

GARDEN ROUTE TOURS (3 DAY, 5 DAY AND 7 DAY TOURS)

Moving along the southern coast of South Africa and ending off in Cape Town, let Blunden drive, as you take in all the visual beauty our country has to offer.

AIRPORT SHUTTLE SERVICE

We offer a shuttle service from the airport to various destinations in the Metro, including daily shuttles to Jeffreys Bay, St Francis Bay, Port Alfred, Kenton-On-Sea and surrounding areas. Vehicles catering to disabled individuals or groups are also available.



An Unforgettable Steam Train Trip

An ICON returns!



16 Dec 2017 – 07 Jan 2018
Summer Season – daily 9am-5pm

**ON-SITE BOOKINGS at point
of arrival and departure - King's Beach**
ONLINE BOOKINGS OPEN 12 DECEMBER

Visit www.appleexpresstrain.co.za

Find us on Facebook Nelson Mandela Bay Steam Train

Twitter @nmbsteamtrain (Nelson Mandela Bay Steam Train)

Contact us for running dates throughout 2018

BROUGHT TO YOU BY



**A WHOLE LOT
MORE!
FOR LESS!**
NELSON MANDELA BAY
#SHARETHEBAY

NELSON MANDELA BAY TOURISM PASS

The Nelson Mandela Bay Pass – Experience a whole lot more for less!

The Nelson Mandela Bay Pass, a smartcard access card, provides you with free admission to a variety of attractions and activities in Nelson Mandela Bay. This includes amongst others museums, game reserves, scuba diving, art galleries, sightseeing tours and many more. It also entitles you to some great discounts in selected stores for shopping, activities, entertainment and more. When purchasing a NMB Pass you get a smartcard as well as a free guide to all the offers available. The card, when valid, gives you access to the offers as advertised in the guide. Be sure to get your Nelson Mandela Bay Pass and discover all the excitement that Nelson Mandela Bay has to offer.

TYPES OF PASSES

Choose between the "5 in 1" NMB pass or "unlimited access" NMB passes

PRICES

Prices are subject to change & start from as little as R400 for unlimited access cards & R540 for the 5 in 1 passes.



28 Getting Around

Nelson Mandela Bay's motor freeways are easily accessible. The uncongested motorways are 'user friendly' and getting around is an easy scenic experience. Public transport is adequate, with an option of inter-city bus shuttle, UBER, minibus & metered taxis covering most of the city area. All major car-hire companies operate from the airport or proximity.

Intra-City Bus Service: Buses to all parts of the city and residential areas depart from the Market Square Bus Station, located beneath Kwantu Towers, Strand Street. Outdoor access is from the stairs at Vuyisile Mini Square (Market Square) level, Govan Mbeki Avenue, or via the Traduna Mall escalators beneath Vuyisile Mini Square. Algoa Bus Company Timetable Information Toll Free No: 080 142 1444, Tel: +27 (0) 41 404 1200.

- **Inter-City Coach Services:** Luxury inter-city coaches operate regular services between major cities and towns in South Africa. For further information, contact:
- **Eldo Coaches,** 262 Cape Road, 24hr Call Centre tel: 086 113 5367, E-mail: pe@eldocoaches.co.za Website: www.eldocoaches.co.za
- **Greyhound & City Liner,** Rochelle Centre, Ring Rd, Greenacres, tel: +27 (0) 41 363 4555 / 24hr Customer Service 083 915 9000 / Website: www.greyhound.co.za
- **Intercape Mainliner,** c/o Flemming & North Union Str., 24hr Call Centre Bookings tel: 086 128 7287, E-mail: info@intercape.co.za / Website: www.intercape.co.za
- **Mini-Lux Luxury Minibus,** tel: +27 (0) 43 741 3107 (regular bus service between Port Elizabeth & East London via Grahamstown).
- **Translux & City to City,** ADT House, Ring Rd, Greenacres. Central Reservations & enquiries, tel: 086 158 9282 / Website: www.translux.co.za (online bookings can also be done through www.computicket.com, select the category 'Bus Tickets').

Port Elizabeth International Airport: The centrally situated Port Elizabeth Airport, located along Alister Miller Drive, is very accessible and within easy reach from all parts of the city. The Airport is serviced regularly by South African Airways (SAA) as well as certain local and national airlines. Free Wi-Fi. ACSA (Airports Company SA Ltd). Tel: +27 (0) 41 507 7319 Website: www.airports.co.za/airports/port-elizabeth

Railway Station / Train Services: The city's mainline railway station is situated in the centre of the city in Station Street, just off Strand Street, alongside the Campanile and the harbour entrance. Shosholozameyl (Spoornet). General Enquiries, Reservations & Fares, Central Reservations: 086 000 8888. / Port Elizabeth Station: tel: +27 (0) 41 507 2291 / Uitenhage Station: tel: +27 (0) 41 994 2002 Website: www.shosholozameyl.co.za

UBER: This mobile phone app. connects drivers and riders all over the globe, including Nelson Mandela Bay. In South Africa, a debit or credit card is acceptable to make payment or there is a cash option. See uber.com for more information.

METERED TAXI TIPS

Avoid utilizing cabs that are unmarked & carry no identification. The taximeter fare is for the protection of the hirer • Avoid using cabs which do not have a taximeter fitted, or if the driver claims that the taximeter is defective, or alternatively check the odometer for the distance travelled after first establishing the rate per kilometer. • When boarding, the taximeter display must be blank of zero, and should only be set in motion once the user has hired the vehicle. • Quotations may be slightly inflated due to exact distance to destination being unknown • For fairness, only accept fixed quotes if the taximeter is set in motion so as to compare the quote with the fare calculated by a taximeter. • Rates are charged per kilometer, and a minimum fare usually applies.

Alpha Cabs

Alpha Cabs – The First Name to Get You There. We are a registered cab and transport company, able to take you anywhere, be it around the corner, elsewhere locally and nationally. Whether you are a South African or a visitor to our country, there's a vehicle in our fleet to carry you safely and on time. Just Call Us. Tel: +27 (0) 41 364 1703 / Cell: +27 (0) 74 776 2666 / Cell: +27 (0) 76 484 3031 We Know Places



29 Scenic Excursions

Excursions into the heart of Nelson Mandela Bay and surrounding areas are exciting self-drive options available for the intrepid adventurer.

Ibhayi Sunshine Saunter: The picturesque circular self-drive is ideal for a morning or day trip and highlights the coastal riches of the area along the Western Seaboard of Port Elizabeth. The scenic route covers the beautiful rugged coast along Marine Drive past coves and rock pools as well as charming seaside resorts, lush countryside and tea gardens. There are game farms and kiddies' playgrounds, ideal for family outings. Pods of dolphins and whales are frequently sighted along the coastline. A map of the area is obtainable from Nelson Mandela Bay Tourism's Visitors' Information Centre.

Colchester / Cannonville: The rural villages of Colchester and Cannonville are nestled on the banks of the beautiful Sundays River, a few kilometres from the river mouth where it flows into the Indian Ocean through the majestic and world-renowned Coastal Dune Fields. Only 41 km from Port Elizabeth, this small community boasts the closest point of entry to the southern gate/Camp Matyholweni into the Greater Addo Elephant National Park. An excursion on the Sundays River Ferry which is a double decker cruiser is an optional excursion activity.

Sundays River Valley: The Sundays River Valley stretches from the Sundays River Mouth / Colchester / Cannonville / Addo in the South to Kirkwood further North. The R335 route takes travellers from Port Elizabeth, up the valley into an evergreen world of citrus trees. In October the trees are in full blossom, and the warm air of the Valley is heavy with their perfume. The Valley boasts many places of interest and historical attractions in the surrounding vicinity.

Nearby Attractions: Other highly recommended attractions worth exploring include: Nanaga Farm Stall & Restaurant (along the N2 Highway & R72), Jeffreys Bay / J'Bay (situated just off the N2 Highway, about 75 km southwest of Port Elizabeth), the Surfing Mecca of South Africa and home to the best right-hand point break in the world; the Baviaanskloof Wilderness Area (this Mega Reserve is a protected area in the Eastern Cape Province) which comprises of 192 000 ha. of pristine rugged mountainous terrain offering a unique wilderness experience; the historic town of Grahamstown, home to the annual National Arts Festival; the Valley of Desolation near Graaff-Reinet and The Owl House in nearby Nieu Bethesda; Cradock and the Mountain Zebra National Park; the picturesque holiday village of St Francis Bay; the coastal towns of Kenton-on-Sea and Port Alfred.

30 Youth Travel

in South Africa, Eastern Cape and Nelson Mandela Bay

You don't need to be a millionaire to enjoy a classic chunk of Africa. Travel NowNow is a network of well-equipped backpacker hostels, many in locations that outclass Western hotels, and affordable transport and tour options make budget independent travel a breeze. With a little planning, you can see the Big Seven, trek in the mountains, lounge on the beach and even travel with a purpose, all without bankrupting yourself.

The **Adventure Province** offers backpackers multiple entry points from which to start your journey. Fly in from Johannesburg to **Port Elizabeth**, East London or Mthatha. Rent a car, shuttle or bus to travel to discover rural parts of South Africa. This is our heartland and often travellers feel that they truly connect with our country's people, land and natural beauty, in these areas. When journeying from Cape Town along the Garden Route, ensure you cross the border into the **Eastern Cape** for experiential adventure travel. Create your own unique tour, find your roots and explore the rich, authentic warmth of the Eastern Cape. Make your way from Kwazulu-Natal via the Drakensberg foothills or along the magnificent Coastal routes. Your options are endless; follow your imagination.

The coastal backpacking route will take you from famous "Jbay", along a beautiful, wild, coastline. Follow the sardine run, hike the Wild Coast hills, bike it, surf it or 4x4 it and explore it in a unique way. Discover the meaning of community and create lifelong friendships. There are many inland loops to entice the imagination. This is the more 'unexplored' part of the Eastern Cape. Find the secret trails of the Baviaanskloof, the fossils and food delights of Nieu Bethesda, the magic of Hogsback or the rush of the river at Tsitsa Falls.

The **Province Of Adventure** is the ultimate destination for an adrenaline-fuelled break. Explore some of the most intriguing locations in South Africa, take to the skies, keep your feet on the ground or feel the rush of the ocean. Experience the wonder and steady heartbeat of adventure in the Eastern Cape.

For more information: <https://www.facebook.com/SAYTC/> facebook/
easterncapeSAYTC (<https://www.facebook.com/easterncapeSAYTC/>) or
Website: www.travelnownow.co.za/ saytc.co.za



NELSON MANDELA
UNIVERSITY

We chose his name
so you could
live up to it.



Change the World

T 041 504 1111
E info@mandela.ac.za

mandela.ac.za

31 Business & Conferencing

Nelson Mandela Bay promotes stress-free conferencing and boasts a broad spectrum of professional conference and meeting venues which are easily accessible. Many are within easy reach from city road networks that take time conscious delegates to where they need to be directly. Access between the airport, beach and city-centre shops, hotels, conferencing facilities and luxurious game reserves is trouble free. Nelson Mandela Bay has every reason to be called the "15-minute city".

It is where deal-making decisions are made regularly and where everyday business is an absolute pleasure. Conferencing is effortless and flexible, which is synonymous with its people who offer a welcoming and friendly service. Pre- and post-conference tours are popular with a variety of activity options, ranging from cultural and heritage experiences to wildlife viewing and beach relaxation. It's a destination which offers delegates state-of-the-art technology and where facilities can be arranged to suit any type of conference, meeting or teambuilding activity.



The Nelson Mandela Bay Business Chamber has gone mobile!

Did you know the Nelson Mandela Bay Business Chamber has its own mobile app?

The NMBBC App is an innovative, user-friendly digital platform for business to business promotion in Nelson Mandela Bay and surrounding areas. A key feature of the App is a business directory, which connects App users with businesses in the region, who are members of the Nelson Mandela Bay Business Chamber.

Stay connected with the Nelson Mandela Bay Business Chamber by downloading our brand new mobile app. You will receive alerts and updates on upcoming Nelson Mandela Bay Business Chamber events and business news.



The app is FREE to download on the Apple and Google Play Stores.

Find out more at:
www.nmbbusinesschamber.co.za

www.nben.co.za

NBEN is a One Stop Shop for all Business and Economic Activities in Port Elizabeth and Surrounding Areas. A single brand that carries all....Find Businesses, Malls, Shops, Products, Services, Specials, Entertainment, Tourism, Accommodation, Education, Sports, Fitness, Motoring, Restaurants and More....At the Palm of your Hands in the comfort of your Home. "NBEN for EVERYTHING". Email: info@nben.co.za Cell: +27 (0) 710530781 / +27 (0) 78 700 4653



nelson mandela bay
TOURISM
PORT ELIZABETH | UITENHAGE | DESPATCH



Are you planning a conference and are looking for assistance?



Let Nelson Mandela Bay Tourism support and assist you with sourcing

ONSITE ASSISTANCE & CONFERENCE SUPPORT

- Tourism brochures, maps and other services
- Bid Assistance
- Assist with RFP and other bid specific information

CONFERENCE VENUES

- Site Inspections

CONFERENCE SUPPLIERS

- Accommodation
- Audio Visual equipment
- Exhibition companies
- PCO services
- Pre / Post & Accompanying guest Tours
- Transport - Car Rentals, Shuttle services



For a seamless combination of business & leisure contact

Nelson Mandela Bay Tourism

Tel: +27 (0) 41 582 2575 | E-Mail: conference@nmbt.co.za

Website: www.nmbt.co.za

Coega Vulindlela Accommodation & Conference Centre

We offer Modern Conference Centre, banqueting 500 persons. Two conference halls and 6 breakaway rooms. In-house catering and events planning. B & B that can sleep up to 650 persons – ideal for large groups. Price from R310 per person sharing N2 – Motherwell Turn Off, Addo Road, Markman, Port Elizabeth Tel: +27 (0) 41 405 7700
E-mail: info@coegavulindlela.co.za Website: www.coegavulindlela.co.za

Ibhayi Guest Lodge

Ibhayi Guest Lodge and Conference Centre offer tailor-made conferencing, close to the airport. Ibhayi's facilities include an on-site restaurant – Leo's Bistro & Lounge & Bar, tranquil courtyards, 6 modern conference rooms and barbeque (braai) facilities – perfect for evening functions. Ibhayi is the ideal destination for all your corporate requirements. Book a conference package with us, or let us help you plan your customised conference or corporate stay in Port Elizabeth. Tel: 041 502 9400 Email: nicole@lionroars.com Website: www.ibhayiguestlodge.co.za

Pine Lodge Holiday Resort & Conference Centre

Pine Lodge offers 9 unique conference venues – all housed in a beautiful log-cabin style building. Three breakaway rooms are available (each seating 20 – 50 delegates) while the other 6 rooms can be configured individually or used as one large venue accommodating 260 delegates schoolroom style or 580 cinema style. Pine Lodge also boasts its own on-site teambuilding with ziplines, GPS amazing races and more! Tel: +27 (0) 41 583 4004 Email: conferences@pinelodge.co.za Website: www.pinelodge.co.za

Radisson Blu Hotel Port Elizabeth

An entire floor spanning 680.88sqm has been dedicated to meetings and events. Eight-multifunctional event rooms each equipped with state of the art technology and free high-speed uncapped broadband wireless internet and can accommodate an extensive range of business and social functions, from weddings and intimate cocktail functions to product launches and conferences. Tel: +27 (41) 509 5000 Email: info.port-elizabeth@radissonblu.com Website: www.radissonblu.com/en/hotel-portelizabeth

Singa Lodge

Singa Lodge is situated close to the beachfront and gives a unique experience looking out into the gardens while having your conference or event. Book a corporate or conferencing package tailored to suit your needs. Host your end of year function, or book that special occasion – Singa Lodge specialises in making each moment memorable. Singa Lodge has a boardroom and conference room which can accommodate a maximum 50 delegates. Tel: 041 502 940 Email: nicole@lionroars.com Website: www.singalodge.com

Summerstrand Hotel

Summerstrand Hotel is a three-star hotel situated directly across from one of Port Elizabeth's most pristine eco-friendly beaches. Offering 127 bedrooms and 7 conference venues, the Summerstrand Hotel is the perfect venue for your corporate or leisure function. Summerstrand Hotel offers complimentary wireless connectivity throughout the entire hotel. Contact our conferencing department today on 041 583 3131 or conferencing@hotsummer.co.za to get a quote.

The Hub Boutique Hotel

Conferencing at The Hub is pleasure with its central location and well equipped venue. Our conference room has all the amenities you'd expect from a top venue including a FREE Wi-Fi Hotspot. Our conference room when combined with our lounge and upstairs deck, makes a fantastic function venue – perfect for discreet dinners and event. Tel: +27 (0) 41 581 2127 E-mail: stay@the-hub.co.za Website: www.thehubhotel.co.za

The Willows Resort & Conference Centre

The Willows Holiday Resort offers three-star graded self-catering accommodation units, a large caravan park, private camping sites, as well as conference, function & wedding venues. Situated only a few meters from the beach, it is a fisherman's dream with rugged, rocky outcrops, and a child's paradise with endless rock pools to discover and explore. Tel: +27 (0) 41 396 2000 Email: willows@madibabay.co.za Website: www.thewillowspe.co.za

Nelson Mandela Metropolitan University Conference Venues

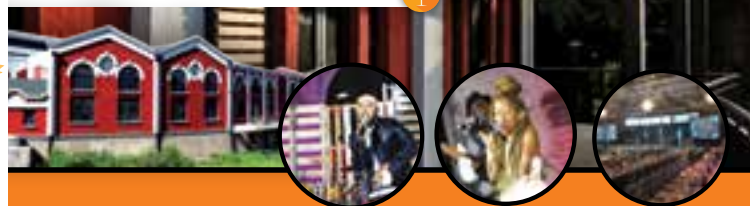
Nelson Mandela Metropolitan University offers more than 19 unique conference venues / centres, at various locations such as their 2nd Avenue Campus, North Campus, South Campus and Missionvale Campus. With the needs of the discerning conference organizer catered for, they are sought after venues for important conferences, product launches, exhibitions, seminars and other select functions. Tel: +27 (0) 41 504 338 1 E-mail: conference.centre@mandela.ac.za Website: www.mandela.ac.za



EVENTS & CONFERRING VENUE

THE TRAMWAYS CATER FOR:

- CONFERENCES
- EXHIBITIONS
- MUSIC EVENTS
- CRAFT SHOWS
- FOOD MARKETS
- NIGHT MARKETS
- PRODUCT / SERVICE LAUNCHES
- ART EXHIBITIONS
- COCKTAIL EVENTS AND SO MUCH MORE



The newly revamped historic and iconic building is now ready to host your bespoke events. With easy access at market related rates, The Tramways offers a more than 1000m² canvas to create your own masterpiece, as well as a secure and guarded parking lot.

We are less than 10 minutes away from the Port Elizabeth International Airport, Beach Front, City Centre and Heritage routes criss-crossing Nelson Mandela Bay.

Boasting a rich history from being a tram and bus depot and then an ice rink, The Tramways Building has in less than a year been a hive of activity, hosting a wide range of events that attract and cater for various target markets within the Nelson Mandela Bay area, and many more.

We look forward to partnering with you in creating memorable events.

For more information contact:

📞 Vuyiseka Skepe on 041 811 8236 or
✉ email tramways@mbda.co.za or

connect with us on Facebook at:

🌐 https://www.facebook.com/TheTramwaysNMB/ or
📷 Instagram @thetramwaysbuilding

A proud development by



1st Floor, Tramways Building,
Cnr Valley Road & South Union Street
Website: www.mbda.co.za Tel: 041 811 8200

32 Stay in the Bay

Nelson Mandela Bay will embrace you with friendliness at any of the accommodation establishments and make you feel totally at home. With a range wide enough to suit any requirements, you will receive the warmest welcome and sincerest hospitality.

For the seasoned and discerning traveller, both Nelson Mandela Bay and the outlying region offer a wide range of outstanding accommodation alternatives. One- and Two-star Hotels are available, offering good value-for-money. For more traditional hotel service, an exciting selection of superior 3- and 4-star hotels, as well as up-market retreats, is offered. The 5-star Boardwalk Hotel and Spa is a stylish and sophisticated source of accommodation. The Metro also has a thriving guest house industry, ranging from the basic Bed & Breakfast or Self-Catering arrangement to the quiet intimacy of a cosy up-market Guesthouse or a luxurious Manor House. A fairly novel and innovative phenomenon of township accommodation is emerging in the form of Township Lodges.

A large choice of fine quality self-catering establishments are situated in prime positions in close proximity to the main beachfront. Most of the holiday resorts, caravan parks and camping sites are also located along the beaches or other more rural locations. Several establishments specialise in excellent budget and group accommodation within the Metro as well, catering for backpackers too.

Some accommodation establishments have been assessed and accredited by the National Tourism Grading Council of SA and display an internationally recognised star rating to reflect their level of grading. For the last six years, NMBT has been an official accredited booking agent for South African National Parks (SANParks) and is the only reservation offices for SANParks in the Eastern Cape. For all accommodation bookings, contact NMBT Call Centre

Tel: +27 (0) 41 582 2575 or E-mail: info@nmbt.co.za Website: www.nmbt.co.za



MORE THAN JUST A BUSINESS TRIP

No matter if you're visiting for business or leisure, from the luxury of Courtyard Hotel Port Elizabeth, to the convenience of Road Lodge Port Elizabeth Airport, there's a City Lodge Group Hotel in Port Elizabeth that's just right for you.

For rates and reservations visit
www.clhg.com or call 0800 11 37 90

CLG487



CITY LODGE HOTEL GROUP

Radisson BLU

INTERNATIONAL
STYLE MEETS
PORT ELIZABETH
WARMTH

RADISSON BLU HOTEL PORT ELIZABETH
Corner of 9th Avenue & Marine Drive, Summerstrand, 6001, Port Elizabeth
T +27 (0)41 208 3880 info.port-elizabeth@radissonblu.com
radissonblu.com/pe-port-elizabeth



Experience a **refreshing take** on corporate and leisure accommodation where **modern comfort** and **exceptional value for money** merge...



Tel: (041) 581 2127 • www.thehubhotel.co.za

Make a lifetime of memories in a single stay...

Escape to a place where the sights and sounds of nature fill your senses, where a world of outdoor adventure and indoor comfort awaits.

Nestled amongst the dunes of the Cape Recife Reserve, just minutes from PE's main beachfront, you'll discover the log cabins and endless onsite activities of **Pine Lodge Resort**.



From the ziplines and nature walks, children's playgrounds and guided FatBike beach tours to our River Spa - **there is so much to discover.**

So, come experience for yourself why you and your family can make a lifetime of memories in just a single stay!



Come and make memories with us!
(041) 5834004 or enquiries@pinelodge.co.za



www.pinelodge.co.za



PHOENIX HOTEL

SINCE 1937 IT HAS ALWAYS BEEN ABOUT QUALITY & VALUE
 5 Winston Nashons Street Central
 Tel # 041 5863553 Email phoenixhotel@telkomsa.net
 Bousique Hotel And An Award Winning Restaurant + 9 Themed Rooms
 To See Our Menu & Rooms www.phoenixhotel.co.za
 Facebook Rated 4.4 Of 5 Stars / Stage Door Phoenix Hotel
 No Pretense, No Attitude Just Great Quality & Value



Humewood Hotel
The friendliest hotel in the friendly city!
 ★ ★ ★
 Beach Road, Humewood
 Tel: +27 (0) 41 585 8961
 Fax: +27 (0) 41 585 1740
 Email:
reservations@humewoodhotel.co.za
www.humewoodhotel.co.za



SUMMERSTRAND HOTEL

For reservations call: 041 583 3131
 E: reservations@hottsummer.co.za | W: www.summerstrandhotel.co.za
 Marine Drive, Summerstrand, 6800, Port Elizabeth



**Travel East...
then Travel West**

WITH LION ROARS HOTELS & LODGES

SPECIALISTS IN SOUTH AFRICAN ACCOMMODATION FROM
WESTERN CAPE TO EASTERN CAPE & KRUGER NATIONAL PARK

TAILORED HOLIDAYS • BOUTIQUE, LUXURY
ACCOMMODATION • FUNCTIONS & EVENTS
DAY SAFARIS AVAILABLE - ONLY A HOUR FROM PE

Book Today: (E) reservations@lionroars.com (T) +27 21 436 1530
www.lionroars.com



Choose from dozens of quality,
accredited accommodation
options in the Port Elizabeth
area on our website

PENBBA

www.pembba.co.za



**KUDU RIDGE
GAME RANCH**

Addo, Eastern Cape, South Africa
 Tel : +27 82 466 6464
info@kuduridge.co.za

Port Elizabeth Beachfront Lodges

Book NOW!



KING'S TIDE
Tel: +27 (0)86 111 5720
kingstide@crowncollection.co.za
16 Tenth Avenue
Summerstrand 6001

BEACON LODGE
Tel: +27 41 583 5061
beacon@beachlodges.co.za
Tenth Avenue
Summerstrand 6001

CROW'S NEST
Tel: +27 41 586 1348
crowsnest@beachlodges.co.za
Windemere Road
Humewood 6001

B&B

"Stylish B&B and self-catering accommodation for business and leisure"

real family time



the willows
www.thewillowspe.co.za

Beacon Lodge

Beacon Lodge provides quality self-catering accommodation for leisure seeking families. Well-appointed apartments with private balconies accommodate up to six adults and two children. Just a 10 minute drive from the airport, Beacon Lodge is favourably located, close to Port Elizabeth's blue flag beaches, hospitality and entertainment attractions. Tel: +27 (0) 41 583 5061 E-mail: admin@beachlodges.co.za Website: www.beachlodges.co.za

Crown's Nest

Crown's Nest offers self-catering accommodation for business and leisure in a prime site, five minutes from the airport. Boasting a fine location close to Port Elizabeth's blue flag beaches, hospitality and entertainment attractions, the lodge combines quality corporate accommodation which can house up to two adults and two children and has a Family Room that can house up to 4 adults and two children. Tel: +27 (0) 41 586 1348 E-mail: crowsnest@beachlodges.co.za Website: www.beachlodges.co.za

Bishops Inn Self-Catering Suites

Welcome to your home away from home! Bishops Inn boasts comfortable seaside living in standard hotel rooms and self-catering suites. We are situated in the quite Killarney Street just off the main Beach Road, Humewood. A quick 5-minute walk from Kings Beach, 10-minute drive from the airport. Try us for your next trip to Port Elizabeth. Tel: +27 (0) 41 585 6828 E-mail: info@bishopsinn.co.za Website: www.bishopsinn.co.za

Courtyard Hotel Port Elizabeth

Looking for a stay that offers you equal parts relaxation and luxury? Then Courtyard Hotel Port Elizabeth is the perfect place for you. Offering 91 spacious suites, situated alongside the Boardwalk Casino complex, directly opposite Humewood Beach. Amenities include wifi, an evening Club Lounge and personal shopping service - all designed to impress. Tel: +27 41 583 4655 Email: cype.resv@clhg.com Web: www.clhg.com

Hacklewood Hill Country House

Hacklewood is a luxurious 5-star Country House situated in the leafy suburb of Walmer. Indulge in an elegant getaway with individually decorated bedrooms, large Victorian bathrooms and private verandas overlooking the magnificent garden. Let our chef thrill your palate with exquisite meals in our award-winning restaurant. Contact Central Reservations on tel: +27 (0) 41 502 3050 or e-mail: reservations@pehg.co.za Website www.hacklewood.co.za

The Humewood Hotel

The Humewood Hotel perfectly situated on the Port Elizabeth beach front offering comfortable rooms, delectable meals and the best weekend (Friday, Saturday and Sunday nights) rates available in Port Elizabeth, spoil that loved one and take them away for one two or three nights at unbeatable value, contact reservations@humewoodhotel.co.za 'Available 7 January to 15 December' Website: www.humewoodhotel.co.za Tel: +27 (0)41 585 8961

Isang Gate Boutique Hotel & Spa

Set around an infinity pool, our 5-star boutique hotel is only a 2-minute walk from the beach. Surrounded by an African zen garden, it has a spa, restaurant & bar, gym and a state of the art conference facility, and also caters for bespoke events like weddings, high teas, birthday parties, ect. Tel: +27 (0) 41 811 2225 E-mail: guestrelations@isangogate.co.za Website: www.isangogate.co.za

King's Tide Boutique Hotel

Situated a gentle stroll from the beachfront at Hobie Beach in Summerstrand, King's Tide Boutique Hotel offers luxurious yet affordable bed and breakfast. Delectable breakfasts are served daily and other meals are prepared on request. Red carpet treatment is standard issue in opulently decorated suites with dream bathrooms and private patios. Tel: +27 (0) 86 111 5720 E-mail: kingstide@crowncollection.co.za Website: www.kingstide.co.za

The Beach Hotel

The best location on Port Elizabeth's magnificent beachfront – The Beach Hotel combines the ultimate location with friendly hospitality and homely comfort in its 58 en-suite bedrooms. Stunning beach-views, a choice of 3 superb restaurants and conference facilities, make The Beach Hotel the perfect choice for business or pleasure. Contact Central Reservations on Tel: +27 (0) 41 502 3050 or e-mail: reservations@pehg.co.za Website www.thebeachhotel.co.za

The Kelway Hotel

Conveniently situated close to the main routes, walking distance from swimming beaches and 5 min. drive from Port Elizabeth Airport. Our multigraded hotel (3 & 4 stars) offers Comfortable Standard rooms for business overnight trips as well as beautiful Luxury rooms for longer stays and leisure breakaways. Fully equipped conference venues, complimentary Wi-Fi, plunge pool, and Fully Licensed Restaurant & Bar. Tel: +27 (0) 41 584 0638 E-mail: reservations@thekelway.co.za Website: www.thekelway.co.za

City Lodge Hotel Port Elizabeth

Whether you are planning on visiting Port Elizabeth for business or leisure, our City Lodge Hotel Port Elizabeth has everything you need, including 147 rooms, a sparkling swimming pool, fitness room and meeting room. So you can stay over during those important business trips, or bring the family for a great holiday by the sea. Tel: +27 41 584 0322 Email: clpe.resv@clhg.com Web: www.clhg.com

Algoa Bay Bed & Breakfast

Offering both twin and double rooms, Algoa Bay Bed & Breakfast provides business or leisure accommodation. Situated in a quiet cul-de-sac in Ferndale Road, Humewood, Algoa Bay Bed & Breakfast is a 5-minute walk from the exclusive Port Elizabeth beachfront as well as numerous restaurants and take-away establishments. Off-street parking with remote access is available. Tel: +27 (0) 41 582 3084 E-mail: bookings@algoabay.com / Email: res1@anpe.co.za Website: www.algoabay.com

Lodge on Main Guest House and Conference Centre

Our luxurious country retreat in the heart of Walmer, recently entirely renovated, offers stylish conference facilities and a trendy bar lounge for all types of functions. This exquisite 4-star, 9-bedroom property now with boutique hotel appeal also offers guests WIFI and secure parking at no extra charge. All 9 bedrooms may be booked on B&B basis, 3 of the 9 rooms offer a self-catering option. Contact Reservations on +27 (0) 41 581 3146 or email: res@lodgeonmain.co.za Website: www.lodgeonmain.co.za

Road Lodge Port Elizabeth Airport

Staying in Port Elizabeth for business or as a stopover? Don't sacrifice quality for price. Our 90 room Road Lodge Port Elizabeth Airport allows travellers to enjoy a convenient stay, without having to spend those big bucks. Situated in Walmer, this hotel is within walking distance of the airport terminal and is close to Newton Park. Tel: +27 41 506 7000 Email: rlpeairport.gm@clhg.com Web: www.clhg.com

Road Lodge Port Elizabeth

Holidays shouldn't cost an arm and a leg – That's where our 92 room Road Lodge Port Elizabeth comes in – close to all the favourite Port Elizabeth attractions, including the Boardwalk Casino, Hobie Beach and only 8 minutes from the CBD. Also, the same rate is charged whether there is one, two or even three people sharing a room! Tel: +27 41 583 4404 Email: rlpe.dm@clhg.com Web: www.clhg.com

Town Lodge Port Elizabeth

Travelling to the windy city? Town Lodge Port Elizabeth offers perfect breezy accommodation, being ideally located across the road from Humewood Beach, this Town Lodge complements its quality features and facilities with magnificent sea views. Within walking distance of the Boardwalk entertainment complex and offers convenient access to the city's CBD and the airport. Tel: +27 41 509 2000 Email: tlpe.resv@clhg.com Web: www.clhg.com

Accommodation Outside Port Elizabeth

Addo Dung Beetle Guest Farm

4-star guest farm situated in the heart of a citrus farm, only 4km away from the main gate of the Addo Elephant National Park. 5 Luxury chalets B&B, 3 bush cabins with self-catering facilities and 4 inspired dung beetle suites B&B. Open safari vehicle to visit the Addo Elephant National Park, operated by Geared 2 Go Tours. Cell: +27 (0) 83 399 4129. E-mail: addodungbeetle@eezi.net. www.addodungbeetle.co.za

Addo Gateway Lodge / Addo Cruises

3-star B & B / Self Catering accommodation at Cannonville / Colchester entrance side of the Addo Elephant National Park. 5/7 Bedrooms Fully Equipped; Great Hospitality & Service. Across road from Sundays River, only 35km from PE & 4km from Addo Elephant National Park South Gate. Also, river cruises and sand sledding with the Sundays River Ferry / Addo Cruises. Cell: +27 (0) 82 418 0776 / (0) 82 465 4391 E-mail: maggiemann@addogatewaylodge.co.za Website: www.addogatewaylodge.co.za / www.addocruises.co.za

Africanos Country Estate

Africanos Country Estate prides itself on its tranquil atmosphere and contemporary architecture. This hotel comprises of luxurious guest suites, each rich with character and yet ever so modest making it the perfect home away from home. Our restaurant serves exquisite country cuisine and we are the only Sushi bar in Addo. Corner of Zuurberg Road & R336, Addo, 6105 Tel: +27 (0) 42 233 0030 / 32 E-mail: info@africanos.co.za Website: www.africanos.co.za

The Sands @ St Francis

Nestled in the picturesque seaside village of St Francis Bay, The Sands invites you to relax and unwind in understated luxury and comfort. 5 Spacious en-suite bedrooms offer separate showers, Jacuzzi bathtubs and open onto a private deck with uninterrupted views of the majestic Indian Ocean and unspoilt beach. Contact Central Reservations on Tel: +27 (0) 41 502 3050 or e-mail reservations@pehg.co.za Website: www.thesands.co.za

GUEST FARM
DE OLD DRIFT
★★★★



COME AND RELAX IN OUR TRANQUIL ENVIRONMENT, WITH ONLY THE SOUNDS OF NATURE AT YOUR DOORSTEP.

DE OLD DRIFT GUEST FARM, A SHORT DISTANCE FROM THE LITTLE VILLAGE ADDO IN SOUTH AFRICA, MALABARA-REEF EASTERN CAPE PROVINCE AND ONLY 12KM FROM THE RENOWNED ADDO ELEPHANT NATIONAL PARK, IS A WHOLESTIC FARM-STYLE GUEST HOUSE OFFERING BED & BREAKFAST ACCOMMODATION AS WELL AS SELF-CATERING ACCOMMODATION (LUNCH AND DINNERS ALSO AVAILABLE AND WE DO SURE-GAME DRIVES TO THE ADDO PARK)

info@deolddrift.co.za Cell: 082 823 7231
www.deolddrift.co.za



There's nothing like Africanos!

Luxury Accommodation
Restaurant & Sushi Bar
Wedding & Function Venue
Conference & Teambuilding



www.africanos.co.za
T: 042 233 0030/32 - info@africanos.co.za

33 Universal Accessibility

Nelson Mandela Bay is an agreeable holiday option for persons with disabilities. The destination caters for travellers with disabilities, with a select variety of activities, attractions and accommodation options available.

Accessible Accommodation in Nelson Mandela Bay: While accommodation options are limited, some hotels do offer rooms suitable for persons with disabilities. These include: City Lodge (3-star), tel: +27 (0) 41 584 0322 • Courtyard (4-star), tel: +27 (0) 41 583 4655; Garden Court Kings Beach, tel: +27 (0) 41 582 3720; Sun 1, tel: +27 (0) 41 585 6380 • PE Airport Road Lodge (1-star), tel: +27 (0) 41 506 7000 • Summerstrand Hotel, tel: +27 (0) 41 583 3131 • The Boardwalk Hotel, tel: +27 (0) 41 507 9434/5/6 • The Paxton Hotel, tel: +27 (0) 41 585 9655 • The Road Lodge, Boardwalk (1-star), tel: +27 (0) 41 583 4404 • Town Lodge (2-star), tel: +27 (0) 41 509 2000.

A select choice of B & B or self-catering accommodation is also available: Dempsey's Self Catering Guest House (3-star), tel: +27 (0) 41 581 3854; Forest Hall B & B (4-star), tel: +27 (0) 41 581 3356, Addo Gateway Lodge (3-star), tel: +27 (0) 41 468 0140. Some B & B / Guest Houses claim to be partly accessible and may be able to accommodate visitors with disabilities who are relatively mobile. Travellers should make advance enquiries regarding the degree / level of accessibility prior to arrival. Addo Elephant National Park, tel: +27 (0) 42 233 8600 has a wheelchair friendly nature trail 'The PPC Discovery Trail' and universally accessible chalets as well as at the new Camp Matyholweni, tel: +27 (0) 41 468 0916/8.

Accessible Sights & Attractions: Attractions such as Bayworld, Nelson Mandela Metropolitan Art Museum, and the Boardwalk Casino & Entertainment Complex have been designed to fully accommodate all guests. Tenpin bowling at the Lighthouses at The Boardwalk Complex is an indoor option. Some cinema venues may also be patronised. The Sundays River Ferry, only 30min drive from Port Elizabeth, is fully equipped for persons with physical disabilities – the craft is secure with a ramp for wheelchairs and assistance is offered to other mobility impaired visitors, cell: +27 (0) 82 465 4391.



Shopping Centres: Most upmarket retail shopping complexes, including Walmer Park Shopping Centre and Greenacres Shopping Centre (inter alia) as well as Baywest Mall (the Eastern Cape's one and only destination centre) are the most wheelchair friendly Centres in Nelson Mandela Bay. Wheelchair-users have easy access to all the amenities within the complex, including the movie theatres, ablution facilities, restaurants, coffee shops and clothing stores, amongst others.

Accessible Beachfront Facilities: Port Elizabeth's renowned beaches facilitate access of wheelchairs, especially along the King's Beach promenade. Nelson Mandela Bay received "Blue Flag" status for Kings Beach and Humewood Beach for the 2017/18 season and has accessible ablution facilities and beach "off-road" wheelchairs for hire.

Accessible Eateries: Nelson Mandela Bay offers a wide variety of cuisine. Some restaurants are completely wheelchair-friendly (including accessible ablution facilities). However, the majority are partially accessible with only a ramp for easy access through the front door.

Essential Contact Details

- Quadriplegic Assoc. of E. Cape, tel: +27(0) 41 364 2271
E-mail: qaec@iburst.com
- Association for the Physically Disabled & Access Audit, tel: +27 (0) 41 484 5426 E-mail: info@apdnmb.org.za Website: www.apdnmb.org.za
- CE Mobility (Medihire), tel: +27 (0) 41 373 3780
E-mail: adrian@cemobility.co.za
- Retina South Africa (Visual accessibility & service products for sight-impaired tourists.) tel: +27 (0) 41 363 0164 / +27 (0) 82 788 2796.
E-mail: eastcape@retinasa.org.za Website: www.retina-ec.org.za



VULINDLELA ACCOMMODATION AND CONFERENCE CENTRE



Coega VACC Lifestyle Centre is known for its tourist attractions with the Addo Elephant Park and game resorts in close proximity and nearby beautiful Beachfront attractions.

- Modern Conference Centre | banqueting 500 persons
- In-house catering and events planning
- Chalets that can sleep up to 650 persons
- Price from R330 per person sharing

For information and sales contact:
Tel.: 041 405 7700 or Email:
info@coegavulindlela.co.za



www.coegavulindlela.co.za